

# SB800P Series

## Dual Driver Subwoofers SB825P & SB828P



SB828P

- ▶ Premium dual or single voice coil transducers with ultra linear suspension behavior for exceptional impulse response
- ▶ Innovative ultra-low turbulence port
- ▶ Can be ground stacked or permanently suspended with 16 x M10 points
- ▶ Flexible mounting, weather protection & color options

### OVERVIEW

The EAW engineering team has pushed the legendary SB series to new levels with the introduction of SB825 and SB828.

SB800 is designed around a low turbulence port based in fluid dynamic research married with groundbreaking transducer design. Innovative ultra-linear suspension behavior and symmetric flux density provide exceptional impulse response and output.

Compact height and depth allow for the subwoofers to be deployed in many room types, and configurable sound-isolating feet allow for either horizontal or vertical installation. Sixteen M10 mounting points allow for a myriad of permanent suspension options.

### TECHNICAL SPECIFICATIONS

PERFORMANCE	SB828P	SB825P
<b>Max SPL<sup>1</sup></b>	143 dB	138 dB
<b>Operating Range<sup>2</sup></b>	25-130 Hz	27-135 Hz
<b>Nominal Beamwidth<sup>3</sup></b>	<b>Horizontal 360° Vertical 360°</b>	
<b>Power Handling</b>	4000W	3000W
<b>Nominal Impedance</b>	4 ohms	4 ohms
CONFIGURATION	SB828P	SB825P
<b>Subsystem</b> LF Transducer, Loading	2x 18in Cone, 4.5in Tetracoil Dual Voice Coil, Vented	2x 15in Cone, 4.5in Voice Coil, Vented
<b>Operating Mode</b> Single-amp	<b>Amplifier Channels 1</b> <b>External Signal Processing</b> EAW DSP	
PHYSICAL	SB828P	SB825P
<b>Physical Rigging</b>	16 x M10 Mounting Points	
<b>Dimensions (H×W×D)</b>	21 x 52.5 x 30in (533 x 1334 x 762mm)	17 x 42 x 24in (432 x 1067 x 610mm)
<b>Net Weight*</b>	200lbs (90.7kg)	140 lbs (63.5kg)
<b>Shipping Weight*</b>	215 lbs (97.5kg)	155 lbs (70.3kg)
<b>Connector Type</b>	Terminal strip & loop thru NL4	

1 Calculated max SPL at 1m with 4:1 (12dB) crest factor pink noise. Specified as whole space (free field) for full range loudspeakers, half space for subwoofers.  
 2 Operating Range: Range where the processed Frequency Response stays within -10 dB SPL of the power averaged SPL within this range; measured on the geometric axis. Narrow band dips are excepted.  
 3 Nominal Beamwidth: Design angle for the -6 dB SPL points, referenced to 0 dB SPL as the highest level.

Compact height & depth for wicked flexible install

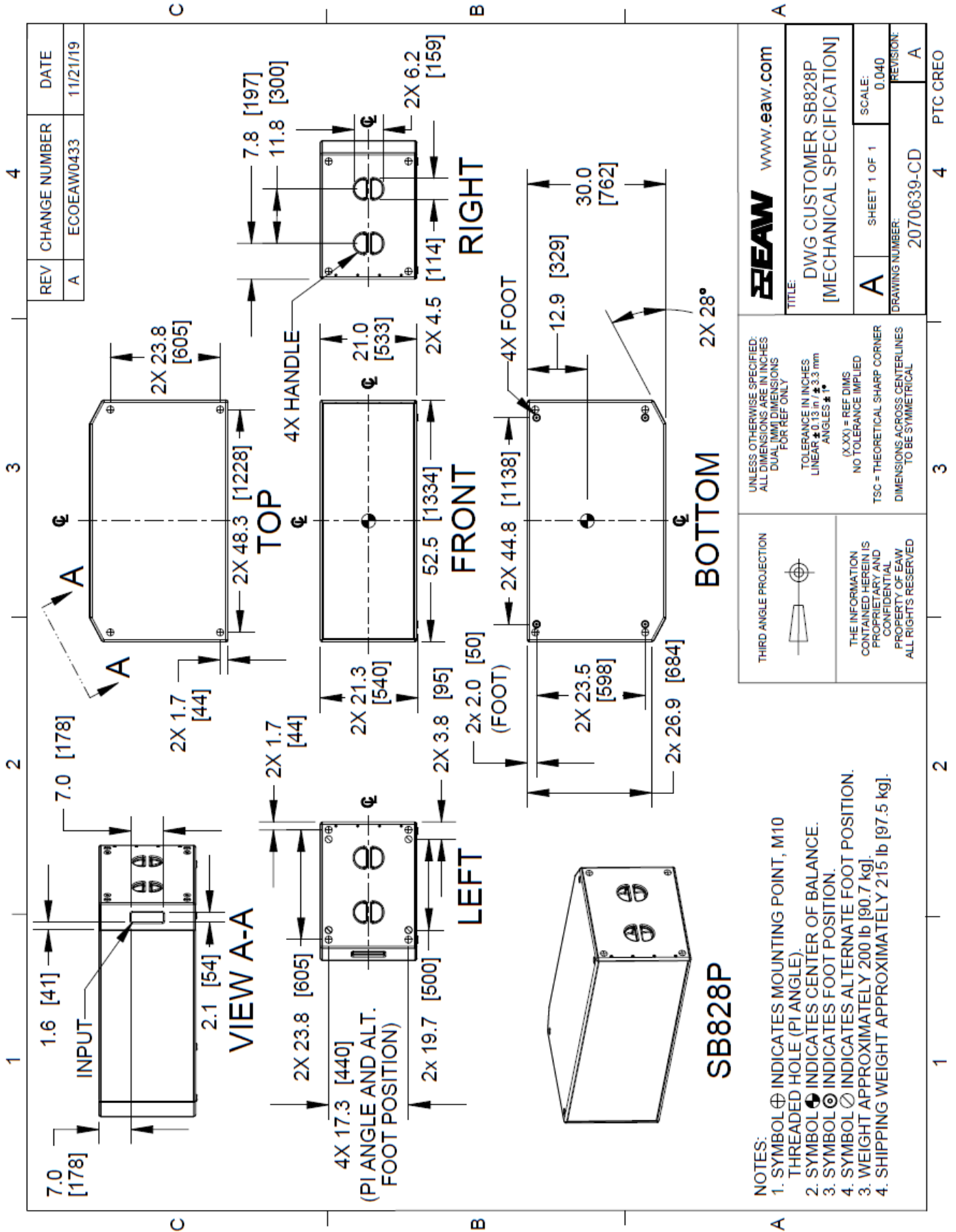
Integrated handles for maneuverability during install or production

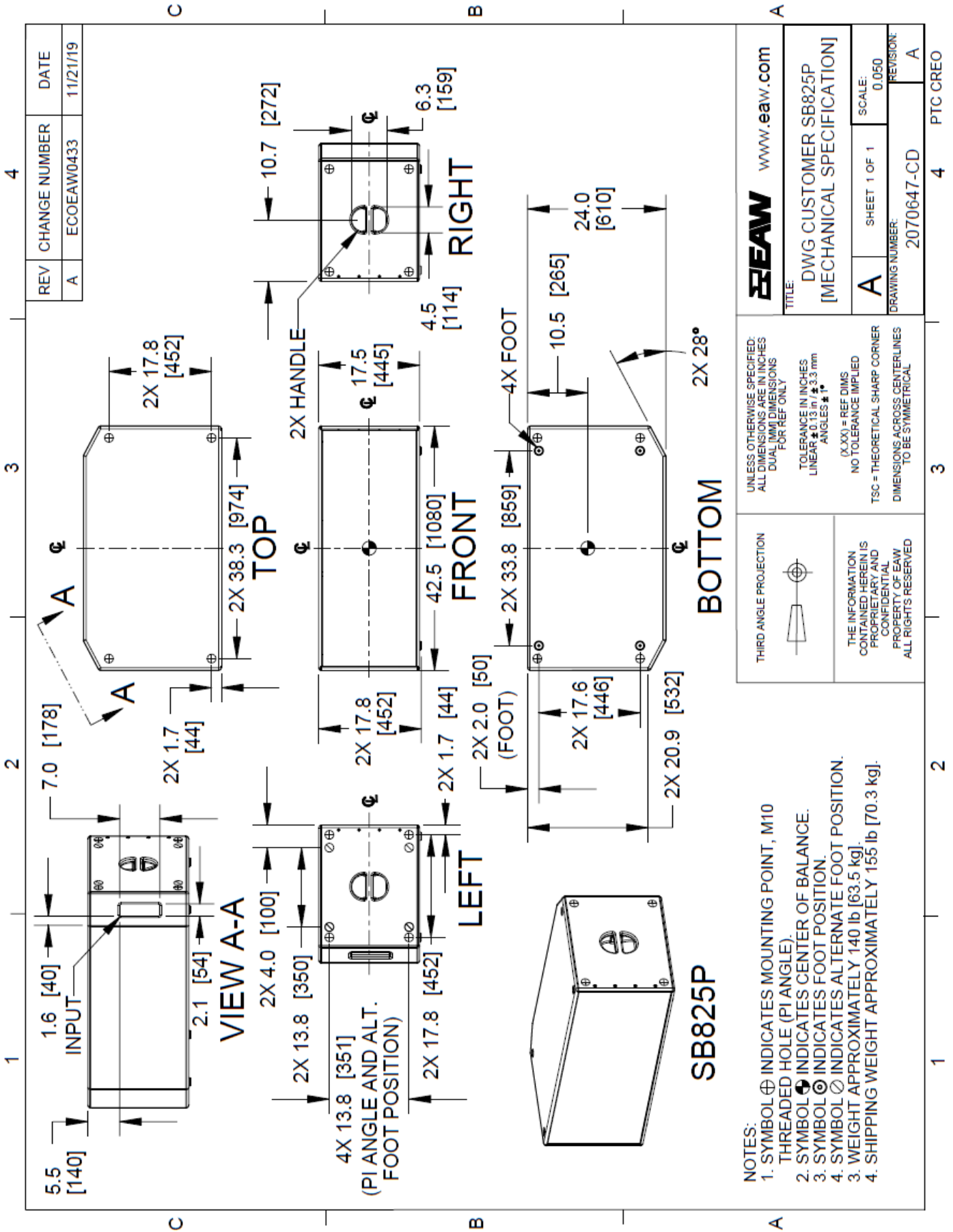
M10 mounting points on all sides



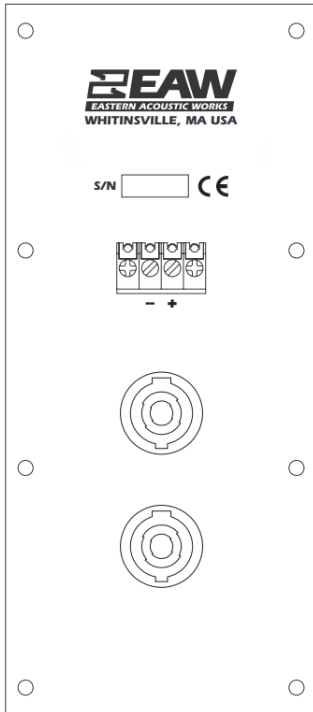
SB825P

Swappable feet for horizontal or vertical configuration

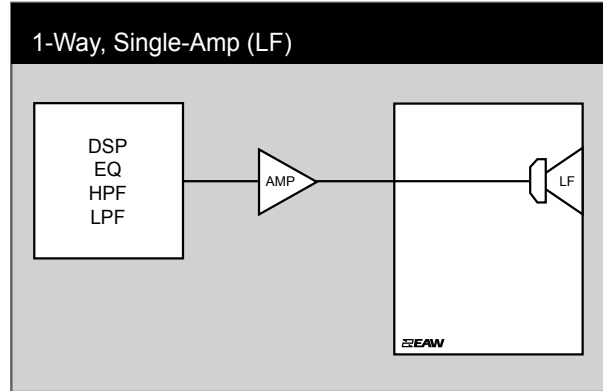




INPUT PANEL



SIGNAL DIAGRAM



LEGEND

- DSP:** User-supplied Digital Signal Processor.
- HPF:** High Pass Filter for crossover or Recommended High Pass Filter.
- LPF:** Low Pass Filter for crossover.
- LF/MF/HF:** Low Frequency / Mid Frequency / High Frequency.
- AMP:** User-supplied Power Amplifier.
- XVR:** Passive LPFs, HPFs, and EQ integral to the loudspeaker.



One Main Street  
Whitinsville, MA 01588  
Tel 800 992 5013 / +1 508 234 6158

