

USER'S MANUAL
BEDIENUNGSANLEITUNG
MANUEL D'UTILISATION
MANUAL DE USUARIO
INSTRUKCJA OBSŁUGI
MANUALE D'USO



STINGER G3 SERIES

ACTIVE LOUDSPEAKER

LDEB82AG3 / LDEB102AG3 / LDEB122AG3 / LDEB152AG3

LDEB282AG3

CONTENTS / INHALTSVERZEICHNIS / CONTENU / CONTENIDO / TREŚĆ / CONTENUTO

ENGLISH

PREVENTIVE MEASURES
INTRODUCTION
CONNECTIONS, CONTROLS AND INDICATORS
STAND FLANGE
USE AS A STAGE MONITOR
OPTIONAL ACCESSORIES
TECHNICAL SPECIFICATIONS
MANUFACTURER INFORMATION

DEUTSCH

SICHERHEITSHINWEISE
EINFÜHRUNG
ANSCHLÜSSE, BEDIEN- UND ANZEIGEELEMENTE
STATIVFLANSCH
VERWENDUNG ALS BÜHNENMONITOR
OPTIONALES ZUBEHÖR
TECHNISCHE DATEN
HERSTELLERERKLÄRUNGEN

FRANCAIS

MESURES PRÉVENTIVES
INTRODUCTION
CONNECTEURS, CONTRÔLES ET INDICATEURS
PUITS POUR PIED
UTILISATION COMME RETOUR DE SCÈNE
ACCESSOIRES OPTIONNELS
CARACTÉRISTIQUES TECHNIQUES
DÉCLARATIONS FABRICANT

ESPAÑOL

3-4	MEDIDAS DE SEGURIDAD	30-31
4-5	INTRODUCCIÓN	31
5-8	CONEXIONES, CONTROLES E INDICADORES	32-34
8	ADAPTADOR DE SOPORTE	35
8	USO COMO MONITOR DE ESCENARIO	35
8-9	ACCESORIOS OPCIONALES	35-36
8-10	CARACTERÍSTICAS TÉCNICAS	36-37
11	DECLARACIÓN DEL FABRICANTE	38

POLSKI

12-13	ŚRODKI OSTROŻNOŚCI	39-40
13	WPROWADZENIE	40
14-16	ZŁĄCZA, ELEMENTY OBSŁUGI I WSKAŹNIKI	41-43
17	KOŁNIERZ STATYWU	44
17	ZASTOSOWANIE JAKO MONITOR SCENICZNY	44
17-18	OPCJONALNE AKCESORIA	44-45
18-19	DANE TECHNICZNE	45-46
20	DEKLARACJE PRODUCENTA	47

ITALIANO

21-22	INDICAZIONI SULLA SICUREZZA	48-49
22	INTRODUZIONE	49
23-25	CONNESSIONI, ELEMENTI DI COMANDO E VISUALIZZAZIONE	50-52
26	FLANGIA PER STATIVO	53
26	UTILIZZO COME MONITOR DA PALCOSCENICO	53
26-27	ACCESSORI OPZIONALI	53-54
27-28	DATI TECNICI	54-55
29	DICHIARAZIONI DEL FABBRICANTE	56

YOU'VE MADE THE RIGHT CHOICE!

We have designed this product to operate reliably over many years. LD Systems stands for this with its name and many years of experience as a manufacturer of high-quality audio products. Please read this User's Manual carefully, so that you can begin making optimum use of your LD Systems product quickly.

You can find more information about **LD-SYSTEMS** at our Internet site WWW.LD-SYSTEMS.COM

PREVENTIVE MEASURES

1. Please read these instructions carefully.
2. Keep all information and instructions in a safe place.
3. Follow the instructions.
4. Observe all safety warnings. Never remove safety warnings or other information from the equipment.
5. Use the equipment only in the intended manner and for the intended purpose.
6. Use only sufficiently stable and compatible stands and/or mounts (for fixed installations). Make certain that wall mounts are properly installed and secured. Make certain that the equipment is installed securely and cannot fall down.
7. During installation, observe the applicable safety regulations for your country.
8. Never install and operate the equipment near radiators, heat registers, ovens or other sources of heat. Make certain that the equipment is always installed so that it is cooled sufficiently and cannot overheat.
9. Never place sources of ignition, e.g., burning candles, on the equipment.
10. Ventilation slits must not be blocked.
11. Keep a minimum distance of 20 cm around and above the device.
12. Do not use this equipment in the immediate vicinity of water (does not apply to special outdoor equipment - in this case, observe the special instructions noted below. Do not expose this equipment to flammable materials, fluids or gases. Avoid direct sunlight!
13. Make certain that dripping or splashed water cannot enter the equipment. Do not place containers filled with liquids, such as vases or drinking vessels, on the equipment.
14. Make certain that objects cannot fall into the device.
15. Use this equipment only with the accessories recommended and intended by the manufacturer.
16. Do not open or modify this equipment.
17. After connecting the equipment, check all cables in order to prevent damage or accidents, e.g., due to tripping hazards.
18. During transport, make certain that the equipment cannot fall down and possibly cause property damage and personal injuries.
19. If your equipment is no longer functioning properly, if fluids or objects have gotten inside the equipment or if it has been damaged in another way, switch it off immediately and unplug it from the mains outlet (if it is a powered device). This equipment may only be repaired by authorized, qualified personnel.
20. Clean the equipment using a dry cloth.
21. Comply with all applicable disposal laws in your country. During disposal of packaging, please separate plastic and paper/cardboard.
22. Plastic bags must be kept out of reach of children.
23. Please note that changes or modifications not expressly approved by the party responsible for compliance could void the user's authority to operate the equipment.

FOR EQUIPMENT THAT CONNECTS TO THE POWER MAINS

24. **CAUTION:** If the power cord of the device is equipped with an earthing contact, then it must be connected to an outlet with a protective ground. Never deactivate the protective ground of a power cord.
25. If the equipment has been exposed to strong fluctuations in temperature (for example, after transport), do not switch it on immediately. Moisture and condensation could damage the equipment. Do not switch on the equipment until it has reached room temperature.
26. Before connecting the equipment to the power outlet, first verify that the mains voltage and frequency match the values specified on the equipment. If the equipment has a voltage selection switch, connect the equipment to the power outlet only if the equipment values and the mains power values match. If the included power cord or power adapter does not fit in your wall outlet, contact your electrician.
27. Do not step on the power cord. Make certain that the power cable does not become kinked, especially at the mains outlet and/or power adapter and the equipment connector.
28. When connecting the equipment, make certain that the power cord or power adapter is always freely accessible. Always disconnect the equipment from the power supply if the equipment is not in use or if you want to clean the equipment. Always unplug the power cord and power adapter from the power outlet at the plug or adapter and not by pulling on the cord. Never touch the power cord and power adapter with wet hands.
29. Whenever possible, avoid switching the equipment on and off in quick succession because otherwise this can shorten the useful life of the equipment.
30. **IMPORTANT INFORMATION:** Replace fuses only with fuses of the same type and rating. If a fuse blows repeatedly, please contact an authorised service centre.
31. To disconnect the equipment from the power mains completely, unplug the power cord or power adapter from the power outlet.
32. If your device is equipped with a Volex power connector, the mating Volex equipment connector must be unlocked before it can be removed. However, this also means that the equipment can slide and fall down if the power cable is pulled, which can lead to personal injuries and/or other damage. For this reason, always be careful when laying cables.
33. Unplug the power cord and power adapter from the power outlet if there is a risk of a lightning strike or before extended periods of disuse.

**CAUTION:**

To reduce the risk of electric shock, do not remove cover (or back). There are no user serviceable parts inside. Maintenance and repairs should be exclusively carried out by qualified service personnel.



The warning triangle with lightning symbol indicates dangerous uninsulated voltage inside the unit, which may cause an electrical shock.



The warning triangle with exclamation mark indicates important operating and maintenance instructions.



Warning! This symbol indicates a hot surface. Certain parts of the housing can become hot during operation. After use, wait for a cool-down period of at least 10 minutes before handling or transporting the device.



Warning! This device is designed for use below 2000 metres in altitude.



Warning! This product is not intended for use in tropical climates.

CAUTION! HIGH VOLUMES IN AUDIO PRODUCTS!

This device is meant for professional use. Therefore, commercial use of this equipment is subject to the respectively applicable national accident prevention rules and regulations. As a manufacturer, Adam Hall is obligated to notify you formally about the existence of potential health risks. Hearing damage due to high volume and prolonged exposure: When in use, this product is capable of producing high sound-pressure levels (SPL) that can lead to irreversible hearing damage in performers, employees, and audience members. For this reason, avoid prolonged exposure to volumes in excess of 90 dB.

NOTE: This equipment has been tested and found to comply with the limits for a Class B digital device, pursuant to Part 15 of the FCC Rules. These limits are designed to provide reasonable protection against harmful interference in a residential installation. This equipment generates, uses and can radiate radio frequency energy and, if not installed and used in accordance with the instructions, may cause harmful interference to radio communications. However, there is no guarantee that interference will not occur in a particular installation. If this equipment does cause harmful interference to radio or television reception, which can be determined by turning the equipment off and on, the user is encouraged to try to correct the interference by one or more of the following measures:

- Reorient or relocate the receiving antenna.
- Increase the separation between the equipment and receiver.
- Connect the equipment into an outlet on a circuit different from that to which the receiver is connected.
- Consult the dealer or an experienced radio/TV technician for help.

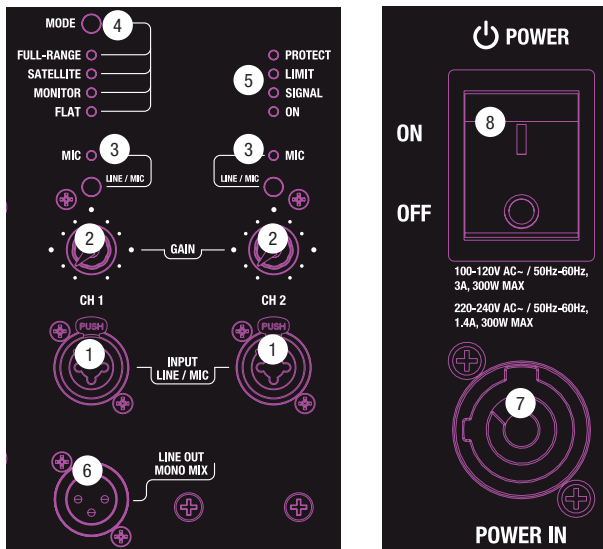
INTRODUCTION**Stinger® G3 Series - Workhorse Loudspeakers For Pros**

Exceptional sound, reliable performance and unparalleled value across the board - that's LD Systems' Stinger® G3 Series. Real workhorses for demanding applications, these loudspeakers have been engineered to provide truly professional sound reinforcement solutions. The Stinger® G3 line includes active and passive models that are simply outstanding in their class. Custom designed drivers with high power handling and BEM modelled waveguides deliver immaculate audio quality, extended low frequency response and coherent coverage.

Sporting lightweight Class D power stages, active Stinger® G3 models are capable of huge sound pressure levels. The multi-purpose tops feature up to a massive 500 watts RMS output and carefully tailored presets for flat response, fullrange, satellite or floor monitor applications. LD Systems' proprietary DynX® DSP technology ensures perfect time alignment and distortion-free performance even at maximum levels. Producing tremendous low end punch and definition with up to 800 watts RMS output power, Stinger® G3 subwoofers include user-friendly presets for rapid system integration and cardioid array configurations.

All Stinger® G3 enclosures are made of rigid, low-resonance birch ply. They are coated with non-abrasive, impact resistant polyurea for superior strength and unrivaled durability. Integrating LD Systems' Dual-Tilt pole mount, multiple suspension points, stacking recesses and ergonomic handles the Stinger® G3 Series has been designed for touring musicians, rental companies and installation applications. The large selection of Stinger® accessories includes smart wall and truss mounting hardware plus a stackable dolly board to facilitate transport. Isn't it time you saddled up?

CONNECTIONS, CONTROLS AND INDICATORS



1 INPUT LINE / MIC CH 1 & 2

Balanced microphone or line input (XLR / 6.3 mm jack combo) for channels 1 and 2 (CH 1 + CH 2). It is also possible to use unbalanced microphone cables (Mono jack). Switching to the corresponding setting is done using the MIC / LINE N 3 switch.

2 GAIN CH 1 & 2

Volume controller for channels 1 and 2 (CH 1 + CH 2). Turning the controller to the left decreases the volume; turning it to the right increases it.

3 LINE / MIC

Switch for switching the input impedance and the signal boost for channels 1 and 2 (CH 1 + CH 2). Please set the volume controller of the corresponding channel to minimum (left stop) before connecting a playback device or microphone. To connect a playback device with a line level (e.g. mixer, keyboard), select the LINE setting (LED indicator MIC is not lit); to connect a microphone, select the MIC setting (LED indicator MIC is lit).

4 MODE

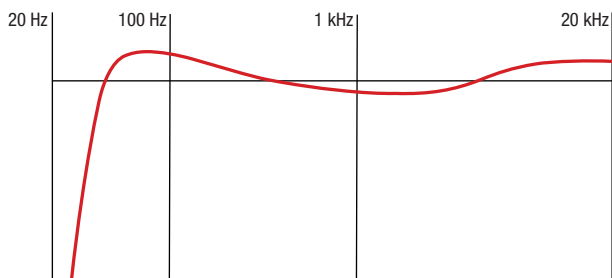
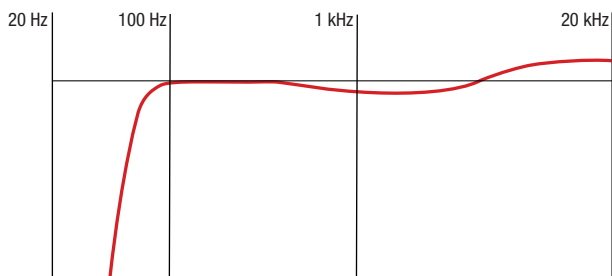
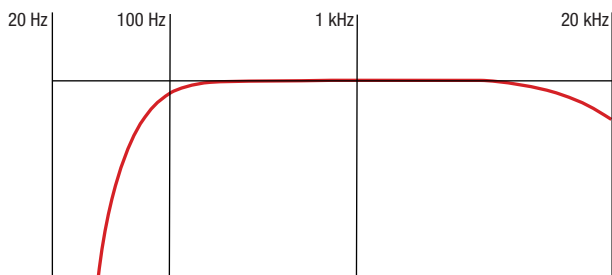
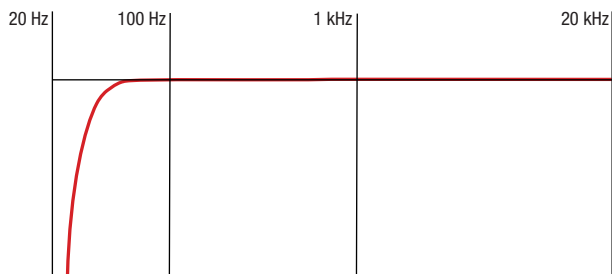
Switch to switch between DSP presets. The different presets are retrieved by repeatedly pressing the switch (check the LED indicator).

FULL-RANGE: Preset for operating the loudspeaker without any additional subwoofer (bass boost, presence cut and treble boost).

SATELLITE: Optimal setting for operating with a subwoofer (high-pass filter at 90 hertz, presence cutback and treble boost).

MONITOR: Preset for operating the speaker as a stage monitor (bass cutback to compensate for ground coupling, treble cutback for optimum, prominent sound at close range).

FLAT: Linear frequency response in DSP preset when using an external equaliser for manual adjustment to the sound situation at hand.

FULL-RANGE**SATELLITE****MONITOR****FLAT**

5 STATUS LEDS

ON: Lights up once the system is properly connected to the power mains and switched on.

SIGNAL: Lights up as soon as an audio signal is present.

LIMIT: Lights up if the loudspeaker system is operating in the clipping range. A short flash of the LED in this instance is not critical. To protect the system, an excessive signal level is gently turned down by the built-in limiters.

If the limiter LED lights up permanently or for longer periods, reduce the volume level. Failure to do so may result in a distorted sound and damage to the speaker system.

PROTECT: Lights up if the system is overloaded/overheated. The amplifiers are muted automatically. Upon reaching normal operating conditions, the device reverts to normal operating mode after a few minutes.

6 LINE OUT MONO MIX

Balanced line output with 3-pin male XLR socket. The incoming signal consists of a mix of signals from channels 1 and 2 (CH 1 + CH 2).

7 POWER

Blue power input socket for power supply to the device. A suitable power cable is included.

8 POWER ON / OFF

On / Off switch for the power supply of the device.



WHAT DOES LD SYSTEMS DynX® DSP STAND FOR?

DSP stands for Digital Signal Processing, DynX® comprises the Limiter, EQ, Compressor and Crossover features. The digital signal processing ensures maximum audio performance with maximum clarity and protects the PA system from overload.

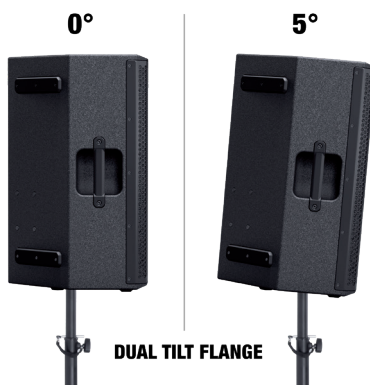
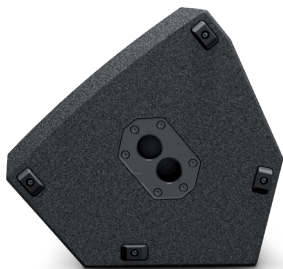
WHAT EXACTLY DOES DynX® DSP DO?

The limiter function protects the speakers and prevents distortions caused by overload. Separate limiters for the bass, midrange and high range attenuate the signal when the level exceeds a value which could have a negative effect. Each limiter is optimised for one of the three seamlessly contiguous frequency ranges (multi-band limiter). The system can be operated in this manner with a higher overall sound pressure as extreme peaks are automatically lowered, so that the total volume does not need to be reduced.

The Multiband EQ works over the entire frequency range and optimises the overall sound of the system.

The crossovers divide the audio signal according to the frequency range of the respective speakers, namely the subwoofer and the tweeter. The amplitude and running-time optimisation of the crossover ensures that all frequencies are output evenly and reach the listener at the same time.

STAND FLANGE



The speakers have a stand flange with a 0° angle socket (rear position) and a socket with a 5° tilt angle (front position). Examples of use: Use the socket with a 0° angle for standing audiences and the socket with a 5° tilt angle for seated audiences.

USE AS A STAGE MONITOR



Thanks to the monitor DSP preset and the universal housing, the EB102AG3, EB122AG3 and EB152AG3 models can also be used as fully-fledged stage monitors. Non-slip rubber rails provide stability; the monitor tilt angle is 54°.

OPTIONAL ACCESSORIES

The speakers in the Stinger G3 Series feature several flying and mounting points. Wall and ceiling mounts, clamps and U-brackets are available as optional accessories, as well as durable protective covers for all models.

LDEB82AG3:	Protective Cover	Item No.: LDEB82G3PC
	Swivel wall mount	Item No.: LDEB82G3WMB
	Tilt and swivel wall mount	Item No.: LDEB82G3WMB1
	Truss Super Clamp	Item No.: LDEBG3SCP
LDEB102AG3:	Protective Cover	Item No.: LDEB102G3PC
	Swivel wall mount	Item No.: LDEB102G3WMB
	Tilt and swivel wall mount	Item No.: LDEB102G3WMB1
	Truss Super Clamp	Item No.: LDEBG3SCP
LDEB122AG3:	Protective Cover	Item No.: LDEB122G3PC
	Swivel wall mount	Item No.: LDEBG3WMB
	Tilt and swivel wall mount	Item No.: LDEBG3WMB1
	EasyMount® Fly Bracket	Item No.: LDEBG3TMB

LDEB152AG3: Protective Cover
Swivel wall mount
Tilt and swivel wall mount
EasyMount® Fly Bracket

Item No.: LDEB152G3PC
Item No.: LDEBG3WMB
Item No.: LDEBG3WMB1
Item No.: LDEBG3TMB

LDEB282AG3: Protective Cover
Swivel wall mount
Tilt and swivel wall mount
Truss Super Clamp

Item No.: LDEB282G3PC
Item No.: LDEB282G3WMB
Item No.: LDEB282AG3WMB1
Item No.: LDEBG3SCP

TECHNICAL SPECIFICATIONS

Model number:	LDEB282AG3	LDEB102AG3	LDEB122AG3	LDEB152AG3	LDEB282AG3
Product type:	PA loudspeaker	PA loudspeaker	PA loudspeaker	PA loudspeaker	PA loudspeaker
Type:	active	active	active	active	active
Low/mid driver dimensions:	8"	10"	12"	15"	2 x 8"
Low/mid driver dimensions (mm):	203.2mm	254mm	304.8mm	381mm	2 x 381mm
Woofer magnet:	Ferrite	Ferrite	Ferrite	Ferrite	Ferrite
Woofer brand:	Custom-made	Custom-made	Custom-made	Custom-made	Custom-made
Woofer voice coil:	2"	2"	2.5"	3"	2"
Woofer voice coil (mm):	50.8 mm	50.8 mm	63.5 mm	76.2 mm	50.8mm
Horn:	BEM optimized CD horn	BEM optimized CD horn	BEM optimized CD horn	BEM optimized CD horn	BEM optimized CD horn
HF driver dimensions:	1"	1"	1"	1"	1"
HF driver dimensions (mm):	25.4 mm	25.4 mm	25.4 mm	25.4 mm	25.4mm
HF driver magnet:	Ferrite	Ferrite	Ferrite	Ferrite	Ferrite
HF driver brand:	BMS	BMS	BMS	BMS	BMS
HF driver voice coil:	1"	1"	1"	1"	1"
HF driver voice coil (mm):	25.4mm	25.4 mm	25.4 mm	25.4 mm	25.4mm
Amplifier:	Class D	Class D	Class D	Class D	Class D
Dispersion (H x V):	90 x 50°	90 x 50°	90 x 50°	90 x 50°	90 x 50°
Power RMS:	300 W	300 W	500 W	500 W	500W
Peak power:	600 W	600 W	1000 W	1000 W	1000W
Frequency response:	70 - 20000 Hz	65 - 20000 Hz	58 - 20000 Hz	50 - 20000 Hz	58 - 20000Hz
Max. SPL (peak):	125 dB	127 dB	131 dB	133 dB	131dB
Protection circuits:	Over voltage, over-current, temperature, multiband peak limit (DYNX)	Over voltage, over-current, temperature, multiband peak limit (DYNX)	Over voltage, over-current, temperature, multiband peak limit (DYNX)	Over voltage, over-current, temperature, multiband peak limit (DYNX)	over voltage, over-current, temperature, multiband peak limit (DYNX)
Input sensitivity:	- 9dBu	- 9dBu	- 5dBu	- 5dBu	- 5dBu
Controls:	2 x Gain, Mode, 2 x MIC/LINE	2 x Gain, Mode, 2 x MIC/LINE	2 x Gain, Mode, 2 x MIC/LINE	2 x Gain, Mode, 2 x MIC/LINE	2 x Gain, Mode, 2 x MIC/LINE
Indicators:	On, signal, limit, protect, mode (full-range, satellite, monitor, flat), MIC	On, signal, limit, protect, mode (full-range, satellite, monitor, flat), MIC	On, signal, limit, protect, mode (full-range, satellite, monitor, flat), MIC	On, signal, limit, protect, mode (full-range, satellite, monitor, flat), MIC	On, Signal, Limit, Protect, Mode (Full-range, Satellite, Monitor, Flat), MIC
Line/ Mic inputs:	2 x (switchable)	2 x (switchable)	2 x (switchable)	2 x (switchable)	2 x (switchable)
Line/ Mic input connectors:	XLR, 6.3 mm jack	XLR, 6.3 mm jack	XLR, 6.3 mm jack	XLR, 6.3 mm jack	XLR, 6.3 mm Jack

Line outputs:	1	1	1	1	1
Line output connectors:	XLR	XLR	XLR	XLR	XLR
Operating voltage:	100 V AC - 120 V AC / 200 V AC - 240 V AC, 50 - 60 Hz (automatic conversion) SMPS	SMPS, 100 V AC - 120 V AC / 200 V AC - 240 V AC, 50 - 60 Hz (automatic conversion)	SMPS, 100 V AC - 120 V AC / 200 V AC - 240 V AC, 50 - 60 Hz (automatic conversion)	SMPS, 100 V AC - 120 V AC / 200 V AC - 240 V AC, 50 - 60 Hz (automatic conversion)	SMPS, 100 V AC - 120 V AC / 200 V AC - 240 V AC, 50 - 60 Hz (automatic conversion)
Power consumption (max.):	300 VA	300 VA	600 VA	600 VA	600 VA
Ambient temperature (in operation):	0° - 40°C	0° - 40°C	0° - 40°C	0° - 40°C	0° - 40°C
Relative humidity (in operation):	<80% (non condensing)	<80% (non condensing)	<80% (non condensing)	<80% (non condensing)	<80% (non condensing)
Cabinet material:	12 mm Plywood	12 mm Plywood	15 mm Plywood	15 mm Plywood	12 mm Plywood
Cabinet surface:	Polyurea	Polyurea	Polyurea	Polyurea	Polyurea
Cabinet construction:	vented	vented	vented	vented	vented
Monitor angle:	n.a.	54°	54°	54°	n.a.
Width:	270mm	325mm	390mm	480mm	270mm
Height:	457mm	527mm	627mm	737mm	756mm
Depth:	290mm	308mm	377mm	455mm	290mm
Weight:	10.5 kg	12.7 kg	20.1 kg	26.8 kg	20.5 kg
Features:	M10 thread for superclamp, ergonomically shaped insert handle, aluminium dual-tilt flange (0°/ 5°), prepared for u-frame wall mount, prepared for gravity multi purpose wall mount	M10 thread for superclamp, ergonomically shaped insert handle, aluminium dual-tilt flange (0°/ 5°), prepared for u-frame wall mount, prepared for gravity multi purpose wall mount, monitor rubber rail feet	2 x ergonomically shaped insert handles, aluminium dual-tilt flange (0°/ 5°), multifunctional cabinet design, rugged steel grille, flying points, polyurea coating, quick-mount flying frame adapter, prepared for u-frame wall mount, prepared for gravity multi purpose wall mount, monitor rubber rail feet	2 x ergonomically shaped insert handles, aluminium dual-tilt flange (0°/ 5°), multifunctional cabinet design, rugged steel grille, flying points, polyurea coating, quick-mount flying frame adapter, prepared for u-frame wall mount, prepared for gravity multi purpose wall mount, monitor rubber rail feet	M10 Thread for SuperClamp, 2 x ergonomically shaped insert handles, aluminium Dual-tilt flange (0°/ 5°), rugged steel grille, flying points, polyurea coating, prepared for U-frame wall mount, prepared for Gravity multi purpose wall mount

MANUFACTURER'S DECLARATIONS

MANUFACTURER'S WARRANTY & LIMITATIONS OF LIABILITY

You can find our current warranty conditions and limitations of liability at: https://cdn-shop.adamhall.com/media/pdf/Manufacturers-Declarations-LDSYSTEMS_DE_EN_ES_FR.pdf. To request warranty service for a product, please contact Adam Hall GmbH, Adam-Hall-Str. 1, 61267 Neu Anspach / Email: Info@adamhall.com / +49 (0)6081 / 9419-0.



CORRECT DISPOSAL OF THIS PRODUCT

(valid in the European Union and other European countries with a differentiated waste collection system)

■ This symbol on the product, or on its documents indicates that the device may not be treated as household waste. This is to avoid environmental damage or personal injury due to uncontrolled waste disposal. Please dispose of this product separately from other waste and have it recycled to promote sustainable economic activity. Household users should contact either the retailer where they purchased this product, or their local government office, for details on where and how they can recycle this item in an environmentally friendly manner. Business users should contact their supplier and check the terms and conditions of the purchase contract. This product should not be mixed with other commercial waste for disposal.

FCC STATEMENT

This device complies with Part 15 of the FCC Rules. Operation is subject to the following two conditions:

- (1) This device may not cause harmful interference, and
- (2) This device must accept any interference received, including interference that may cause undesired operation

CE Compliance

Adam Hall GmbH states that this product meets the following guidelines (where applicable):

R&TTE (1999/5/EC) or RED (2014/53/EU) from June 2017

Low voltage directive (2014/35/EU)

EMV directive (2014/30/EU)

RoHS (2011/65/EU)

The complete declaration of conformity can be found at www.adamhall.com.

Furthermore, you may also direct your enquiry to info@adamhall.com.