

# Pro L1750UNL WUXGA 3LCD Laser Projector with 4K Enhancement Without Lens

---



## Premium large-venue laser projector with 4K Enhancement<sup>1</sup>.

The Pro L1750UNL combines a laser light source, inorganic components and 3LCD technology for powerful, uncompromising images. This premium large-venue projector also features native WUXGA performance with Epson® 4K Enhancement Technology<sup>1</sup>. Delivering 15,000 lumens of color/white brightness<sup>2</sup> from a standard 120 V power source, the compact Pro L1750UNL offers ultra bright, vivid color, while its laser light source engine and electrostatic air filter provide virtually maintenance-free operation for up to 20,000 hours<sup>3</sup>. This sleek, white projector's includes built-in Edge Blending, and integration capabilities like 3G-SDI and HDBaseT™, plus nine optional powered lenses (sold separately).

Some lenses will not support the maximum brightness level of this projector. [VIEW THE PDF](#) ►

**Projection System:** High-aperture Epson 3-chip 3LCD

**Native Resolution:** WUXGA (1920 x 1200) w/ 4K Enhancement Technology<sup>1</sup>

**Color Brightness:** 15,000 lumens<sup>2</sup>

**White Brightness:** 15,000 lumens<sup>2</sup>

**Throw Distance Calculator**

**Model:** V11H892920

## Overview

### Bright and Colorful

Features 15,000 lumens of color brightness (color light output) and 15,000 lumens of white brightness (white light output)<sup>1</sup>.

### Laser Light Source

Epson Projectors with Laser Light Source can operate for up to 20,000 hours virtually maintenance free.

### 4K Enhancement Technology

Epson's 4K Enhancement Technology delivers astonishing picture quality — every subtle intricacy is captured.

### 3G-SDI

Allows for the transmission of uncompressed digital video signals. Interface allows for a 328-foot cable length.

### HDBaseT

Combines HDMI, ethernet and RS-232 into one cable

- **Bright, vivid color** — 15,000 lumens color/white brightness<sup>2</sup>
- **Exceptional Full HD widescreen display** — native WUXGA (1920 x 1200) with 4K Enhancement<sup>1</sup> for presentations, videos, digital signage and more
- **Solid-state laser light source** — virtually maintenance-free 20,000-hour laser light source with no lamps<sup>3</sup>
- **Dynamic projection capabilities** — advanced built-in Edge Blending, image warping and curved-surface correction technologies for a variety of applications
- **Powerful** — remarkable brightness from a compact projector with a 120 V power source
- **Advanced connectivity** — 3G-SDI, HDBaseT, HDMI®, DVI-D, VGA, 5-BNC and Stereo Mini
- **Nine optional interchangeable lenses (sold separately)** — with powered lens shift and lens memory
- **Installation flexibility** — 360-degree projection and Portrait Mode for added versatility
- **Remote management and control tools** — included software allows for web-based monitoring and control of Epson networked projectors
- **Image correction camera** — automatically adjusts color and brightness to match other projectors in multiple-screen applications

## Eco Features

- RoHS compliant
- Recyclable product<sup>4</sup>
- Epson America, Inc. is a SmartWay<sup>SM</sup> Transport Partner<sup>5</sup>

### Better Products for a Better Future™

For more information on Epson's environmental programs, go to [www.epson.com/environment](http://www.epson.com/environment)

## What's In The Box:

- Pro L1750UNL projector
- Power cable
- Projector remote control with batteries
- Cable cover
- HDMI clamp

## Specifications

### Specifications Projector:

---

**Projection System:**

High-aperture Epson 3-chip, 3LCD technology

**Projection Method:**

Front / rear / ceiling mount

**Driving Method:**

Epson Poly-silicon TFT Active Matrix

**Pixel Number:**

2,304,000 dots (1920 x 1200) x 3

**Color Brightness - Color Light Output:**

15000 lumens<sup>2</sup>

**White Brightness - White Light Output:**

15000 lumens<sup>2</sup>

**Aspect Ratio:**

Supports 4:3, 16:9, 16:10

**Resolution:**

1920 x 1200 (WUXGA)

**Resize:**

1280 x 1024, 1400 x 1050

**Brightness Uniformity:**

(typical) 90%

**Pixel Arrangement:**

Cross stripe

**Throw Ratio Range:**

(For Standard Lens Only) 1.57 — 2.56

**Size - projected distance:**

60" – 500"

**Contrast Ratio:**

2,500,000:1

**Color Reproduction:**

Up to 1 billion colors

**Light Source Life:**

- Normal: 20,000 hours<sup>3</sup>
- Extended: 30,000 hours<sup>3</sup>

### Effective Scanning Frequency Range:

---

**Pixel Clock, Horizontal, Vertical:**

Pixel Clock

- 13.5 MHz – 162 MHz (up to UXGA 60 Hz)

Horizontal

- 15 KHz – 92 KHz

Vertical

- 50 Hz – 85 Hz

**Horizontal:**

15 kHz – 92 kHz

**Vertical:**

50 Hz – 85 Hz

## General:

---

**Temperature:**

32° to 113° F (0° to 45° C)

**Operating Temperature:**

32 ° to 113 °F (0 ° to 45 ° C)

**Weight:**

52.2 lb (with standard lens, not included)

**Security:**

- Security cable hole
- Lens lock
- Kensington® lock provision,

## Projection Lens:

---

**Type:**

(For Standard Lens, Not Included) Powered shift/focus / zoom

**F-number:**

(For Standard Lens, Not Included) 1.8 – 2.35

**Focal Length:**

(For Standard Lens, Not Included) 36.0 – 57.35 mm

**Zoom Ratio:**

(For Standard Lens, Not Included) Optical zoom 1 – 1.61

**Lens Shift:**

Vertical: ±60%; horizontal: ±18%

## Projector Details:

---

**Input Signal:**

NTSC/NTSC4.43/PAL/M-PAL/N-AL/PAL60/ SECAM/480i/576i/480p/576p/720p/1080i/1080p/UHD/4K

**Interfaces:**

- 3G-SDI x 1
- DVI-D x 1
- HDMI x 1

- HDBaseT x 1
- 5-BNC
- VGA x 1
- Audio in: Mini Stereo x 3
- Variable audio out: Mini Stereo x 1
- USB connector Type B x 1: For service only
- USB connector Type A x 1: For wireless only
- Monitor out: Mini D-sub 15 pin x 1
- Serial: RS-232c x 1

**Fan Noise:**

- Normal mode: 37 dB
- Quiet mode: max. 30 dB

## Projector Dimensions:

---

**Including feet - with standard lens:**

23.1" x 19.4" x 8.3" (W x D x H)

## Remote Control:

---

**Features:**

Power, search selection, lens shift, zoom, focus, test pattern selection, A/V Mute, freeze, user ID, auto, aspect, Color Mode, help, menu, enter, esc and standby

**Operating Distance:**

49 ft

**Operating Angle:**

- Right/left: Front:  $\pm 60$  degrees, Rear:  $\pm 30$  degrees
- Upper/lower: Front:  $\pm 20$  degrees, Rear: +10 to +50 degrees

## Power:

---

**Power Supply Voltage:**

100 – 240 V  $\pm 10\%$ , 50/60 Hz AC

**Power Consumption:**

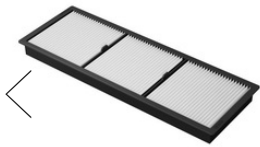
- Normal mode: 1082 W
- ECO mode: 668W
- Communication on: 2.0W standby
- Communication off: 0.3 W standby

---

## Accessories

---





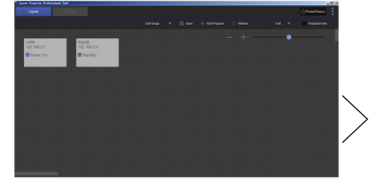
Air Filters



Cables



Connectivity



Control Systems

---

## Support

## Need Support?

Get the latest drivers, FAQs, manuals and more for your Epson product.

### Recommended Links:

- [Drivers & Downloads](#)
- [FAQs](#)
- [Manuals and Warranty](#)
- [Registration](#)
- [Contact Support](#)

---

## Notes:

- <sup>1</sup> 4K Enhancement Technology shifts each pixel diagonally by 0.5 pixels to double the resolution and surpass Full HD image quality.
- <sup>2</sup> Color brightness (color light output) and white brightness (white light output) will vary depending on usage conditions. Color light output measured in accordance with IDMS 15.4; white light output measured in accordance with ISO 21118. Some lenses will not support the maximum brightness level of this projector.
- <sup>3</sup> No required maintenance for the light source and filter up to 20,000 hours. Approximate time until brightness decreases 50% from first usage. Measured by acceleration test assuming use of 0.04 - 0.20 mg/m<sup>3</sup> of particulate matter. Time varies depending on usage conditions and environment. Replacement of parts other than the light source may be required in a shorter period. The projector has a limited warranty of 3 years or 20,000 hours, whichever comes first.
- <sup>4</sup> For convenient and reasonable recycling options, visit [www.epson.com/recycle](http://www.epson.com/recycle)
- <sup>5</sup> SmartWay is an innovative partnership of the U.S. Environmental Protection Agency that reduces greenhouse gases and other air pollutants and improves fuel efficiency.

© 2020 Epson America, Inc.