

Pro L12002QNL Native 4K 3LCD Laser Projector Without Lens



Revolutionary native 4K 3LCD 12,000-lumen laser projector.

The Pro L12002QNL delivers ultra HD image quality for incredible, lifelike performance — all in a remarkably compact form factor. A groundbreaking large-venue projector, the Pro L12002QNL features astounding 4K resolution (3840 x 2160), plus 3LCD technology, for extraordinary detail and 12,000 lumens of color/white brightness¹ for vivid color that's sure to amaze. Its laser light engine and electrostatic air filter provide virtually maintenance-free operation for up to 20,000 hours². With three interface slots designed to accommodate a wide range of inputs, the Pro L12002QNL provides the ultimate in connectivity. Projector also available in black.

Model: V11H832920

Overview

Bright, vivid color

12,000 lumens color/white brightness¹; advanced 3-chip, 3LCD technology

Native 4K resolution

(3840 x 2160)
from a 6 micrometer pixel-pitch panel designed by Epson

Solid-state laser light source

with electrostatic air filter for up to 20,000 hours of virtually maintenance-free operation²

Wide range of optional lenses (sold separately)
including a zero-offset ultra short-throw lens

Powerful
remarkable brightness from a compact, 4K resolution, large-venue projector

Advanced connectivity
two configurable interface slots to accommodate a wide range of inputs

- **Designed for demanding environments** — features a sealed light source and optical engine for outstanding durability for live events and fixed installations
- **Dynamic projection capabilities** — with advanced tools like tiling assist, Edge Blending and auto-color adjustment for fast installation; free software for multi-projector setup
- **Bold, vibrant images** — supports High Dynamic Range (HDR) via HDR10 (PQ) and Hybrid Log Gamma (HLG); BT.709 color space
- **Mechanical shutter** — protects against damage from external laser lights
- **Wide lens shift** — optimized lens and optical engine design

Eco Features

- RoHS compliant
- Recyclable product³
- Epson America, Inc. is a SmartWay™ Transport Partner⁴

Better Products for a Better Future™

For more information on Epson's environmental programs, go to www.epson.com/environment

What's In The Box:

- Pro L12002QNL projector
- power cables (3 m 100 V and 3 m 200 V)
- projector remote control with batteries
- quick reference sheet

Specifications

Specifications Projector:

Projection System:

High-aperture Epson® 3LCD, 3-chip technology

Projection Method:

Front/rear/ceiling mount

Driving Method:

Poly-silicon TFT Active Matrix

Native Resolution:

(3840 x 2160) 4K UHD

Resolution on Screen:

4K UHD

Pixel Number in Device:

8,294,400 pixels (3840 x 2160) x 3 chips

Color Brightness - Color Light Output:

Color Light Output: 12,000 lumens¹

White Brightness - White Light Output:

White Light Output: 12,000 lumens¹

Aspect Ratio:

16:9, 4:3

Brightness Uniformity:

90%

Pixel Arrangement:

Cross stripe

Contrast Ratio:

2,500,000:1

Color Reproduction:

Up to 1.07 billion colors

Light Source Life:

20,000 hours (Normal); 30,000 hours (Extended)²

Illumination Technology:

Laser Diode

General:

Operating Temperature:

32 ° to 122 ° F (0 ° to 50 ° C)

Weight:

113.3 lb (without standard lens, not included)

Security:

Security cable hole, Kensington lock provision

Projection Lens:

Type:

Powered shift/focus/zoom (ELPLM15 Lens)

F-number:

1.8 – 2.35 (ELPLM15 Lens)

Focal Length:

36.0 – 57.4 mm (ELPLM15 Lens)

Zoom Ratio:

Optical zoom 1 – 1.6x (ELPLM15 Lens)

Throw Ratio Range:

1.57 – 2.47 (ELPLM15 Lens)

Lens Shift:

Vertical: ± 58 percent; horizontal: ± 16 percent (ELPLM15 Lens)

Projector Details:

Input Signal:

Input Video Signal (HDMI®, DVI-D, HDBaseT and DisplayPort) 480i/480p/576i/576p/720p/1080i/1080p/3840 x 2160/4096 x 2160

Interfaces:

- HDBaseT x 1
- VGA x 1

Interface (Slot 1)

- ELPIF01 (included from factory)
- DVI-D x 1
- HDMI® x 1 (HDCP2.2)
- DC Out (500 mA)

Interface (Slot 2)

- ELPIF01 (included from factory)
- SD/HD/3G/12G-SDI x 4
- SDI - Active Through x 4

Interface Card (optional)

- ELPIF03
- Display port x 2 (DP 20p)

Other

- USB connector Type B x 1: for firmware update, Copy OSD Settings
- USB connector Type A x 1: for firmware update, Copy OSD Settings, DC Out 900 mA
- Monitor out: Mini D-sub 15-pin x 1
- Serial: RS-232c x 1
- Remote: Stereo mini
- Wire LAN x 1 etherCON

Fan Noise:

45 dB (Normal Mode); max. 38 dB (Quiet Mode)

Projector Dimensions:

Including feet:

24.4" x 14.1" x 31.1" (620 x 358.5 x 790 mm)

Remote Control:

Features:
Power, Search Selection, Lens Shift, Zoom, Focus, Test Pattern Selection, Shutter, Freeze, User ID, Auto, Aspect, Color Mode, Menu, Slot 1, Slot 2 and more

Operating Distance:
49 ft

Operating Angle:
Right/Left: Front: ± 50 degrees; Rear: ± 40 degrees
Upper/Lower: Front: ± 50 degrees; Rear: +30 degrees

Power:

Power Supply Voltage:
100 - 120 V AC, 200 - 240 V AC +/- 10%, 50/60 Hz
Requires 200-240 V for full spec. operation

Power Consumption:
1741 W (Normal Mode)
1030 W (Extended Mode)
2.0 W Standby (Communication on)
0.5 W Standby (Communication off)

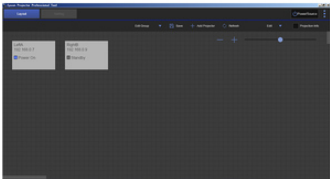
Accessories



Air Filters



Connectivity



Control Systems



Lenses

Support

Need Support?

Get the latest drivers, FAQs, manuals and more for your Epson product.

Recommended Links:

[Drivers & Downloads](#)

[FAQs](#)

[Manuals and Warranty](#)

[Registration](#)

[Contact Support](#)

Notes:

¹ Color brightness (color light output) and white brightness (white light output) will vary depending on usage conditions. Color light output measured in accordance with IDMS 15.4; white light output measured in accordance with ISO 21118. Some lenses will not support the maximum brightness level of this projector.

² No required maintenance for the light source and filter up to 20,000 hours. Approximate time until brightness decreases 50% from first usage. Measured by acceleration test assuming use of 0.04 - 0.20 mg/m³ of particulate matter. Time varies depending on usage conditions and environment. Replacement of parts other than the light source may be required in a shorter period. The projector has a limited warranty of 3 years or 20,000 hours, whichever comes first.

³ For convenient and reasonable recycling options, visit www.epson.com/recycle

⁴ SmartWay is an innovative partnership of the U.S. Environmental Protection Agency that reduces greenhouse gases and other air pollutants and improves fuel efficiency.

© 2020 Epson America, Inc.