

OUT OF STOCK

PowerLite Pro Z9750UNL WUXGA 3LCD Projector without Lens

Contact Us 800.463.7766

Mon-Fri 7am-4pm PT



The PowerLite Pro Z9750UNL projector combines bright projection with Full HD, WUXGA performance — perfect for installation in auditoriums, lecture halls and other large venues. Offering high Color Brightness*, Epson projectors ensure vivid images. With 7,500 lumens of color brightness and 7,500 lumens of white brightness¹, the Z9750UNL makes content shine, even in high ambient light. Featuring 3LCD, 3-chip technology and an array of connectivity options — including HDBaseT™ — this powerful performer delivers uncompromised image quality and professional-grade reliability. And, installation has never been more flexible, with seven optional lenses, lens shift, Curved Edge Blending, Portrait Mode and 360-degree projection features.

High Color Brightness with Epson*

Brilliant image quality requires high color brightness. Epson 3LCD projectors have 100% balanced Color Brightness and White Brightness. Delivering 7,500 lumens of color brightness¹ and 7,500 lumens of white brightness¹, the Pro Z9750UNL projector uses 3LCD, 3-chip technology for brilliant images with true-to-life color.

Projection System: High-aperture Epson 3-chip 3LCD

Native Resolution: WUXGA (1920 x 1200)

Color Brightness: 7,500 lumens¹

White Brightness: 7,500 lumens¹

Throw Distance Calculator

Model: V11H616920

OUR PRICE:

\$6,675.00

AFTER 36% SAVINGS:

\$4,299.00

🕒 Save \$2,376 Today

Overview ▶

Bright and Colorful

Features 7500 lumens of color brightness (color light output)¹ and 7500 lumens of white brightness (white light output)¹.

WUXGA Resolution

1920 x 1200 Full HD widescreen resolution

Edge Blending

Use multiple projectors to overlap images, and there are no bright spots where the overlap occurs – providing dynamic, seamless projection.

Portrait Mode

Allows you to turn the projector 90 degrees – great for digital signage, fashion shows, art galleries and museums

HDBaseT

Combines HDMI, ethernet and RS-232 into one cable

HDMI Connectivity

Includes all-digital, HDMI audio and video connection, for HD quality with just one cable

- **High Color Brightness and reliable performance** — 3LCD, 3-chip technology*
- **One measurement of brightness is not enough** — look for both high color brightness and high white brightness.
The PowerLite Pro Z9750UNL has:
Color Brightness: 7,500 lumens¹
White Brightness: 7,500 lumens¹
- **Widescreen, high-definition performance** — WUXGA (1920 x 1200) resolution supports Full HD for presentations, videos, digital signage and more
- **Seven optional lenses with lens shift** — including short-, wide-, rear- and long-throw lenses designed with a change-out lever for easy installation (**lens not included**)
- **Flexible installation for immersive experiences in any setting** — built-in Curved Edge Blending, Portrait Mode projection, and 360-degree installation
- **Get twice the brightness and power** — optional stackable frame makes it easy to install two projectors for unbelievable brightness, plus 3D support
- **Versatile connectivity** — supports the latest connectivity options, including HDBaseT, HDMI™ and DVI
- **Dual-lamp design with lamp select/relay function** — get both power savings and projector redundancy; includes an innovative liquid cooling system for added reliability
- **Split Screen feature** — project two images (video or still) side-by-side from two different sources simultaneously²
- **Convenient monitor and control features** — easily manage the projector, either directly or remotely; compatible with AMX®, Crestron® and Extron®

What's In The Box:

- PowerLite Pro Z9750UNL projector
- Power cable
- Computer cable
- Projector remote control
- Batteries
- Cable cover
- User manual CD
- Quick Setup Sheet
- PrivateLine support card
- Password protection sticker
- Monitor and Control CD
- **Lens not included**

Specifications

Specifications Projector:

Projection System:

High-aperture Epson 3-chip, 3LCD technology

Projection Method:

Front / rear / ceiling mount

Driving Method:

Epson Poly-silicon TFT Active Matrix

Pixel Number:

2,304,000 pixels x 3LCDs

Color Brightness - Color Light Output:

7,500 lumens¹

White Brightness - White Light Output:

7,500 lumens¹

Aspect Ratio:

Native 16:10 (supports 4:3, 16:9, 5:4)

Resolution:

WUXGA (1920 x 1200)

Lamp Type:Normal:

- ECO mode: Up to 4000 hours²
- Normal mode: Up to 2000 hours²

Portrait:

- Normal mode: Up to 1000 hours²

Lamp Life:

- Normal: 380 W x 2 UHE

- Portrait: 304 W x 2 UHE

Brightness Uniformity:

90%

Pixel Arrangement:

Cross stripe

Throw Ratio Range:

1.74 – 2.82 (standard lens)

Size - projected distance:

60" – 500"

Keystone Correction:

- Vertical: -30 degrees to +30 degrees
- Horizontal: -30 degrees to +30 degrees

Contrast Ratio:

Normal, Dynamic Mode: Up to 15,000:1

Color Processing:

10 bit

Color Reproduction:

Up to 1.07 billion colors

General:

Temperature:

- Normal: 32° to 122° F (0° to 50° C)
- Above 4900 feet: 32° to 104° F (0° to 40° C)

Security:

Kensington®- style lock provision, anchor (metal) bar for security lock or cable, handles attached to body for cable wrap

Projection Lens:

Type:

Powered zoom / focus

F-number:

1.65 – 2.51 (standard lens), lens not included

Focal Length:

36 mm – 57.35 mm (standard lens)

Zoom Ratio:

Optical zoom 1.0 – 1.61 (standard lens)

Lens Shift:Powered

- Vertical: ±60%
- Horizontal: ±18%

Video:

Video Processing:

- Analog: NTSC / NTSC4.43 / PAL / M-PAL / N-PAL / PAL60 / SECAM
- HDMI: 480i / 576i / 480p / 576p / 720p / 1080i / 1080p
- DVI-D: 480i / 576i / 480p / 576p / 720p / 1080i / 1080p

Video Standards:

- 3D Y/C separation, 3D noise reduction, mosquito noise reduction
- DCDi — Directional Correlational Deinterlacing Motion-compensated Interlace-Progressive conversion (2:2, 3:2 film detection)

Super Resolution:

- FineFrame Interpolation
- 8:8 Pull-down Processing
- Closed Captioning

Connectivity Projector:

Standard Connectivity:

- Wired: Integrated 100Mbps
- Wireless: Optional — 802.11b/g/n
- Wireless Security: WPA-PSK (TKIP/AES) / WPA2-PSK(TKIP/AES)

Remote Control and Management:

- Epson EasyMP® Monitor
- Network projection
- Multi-projection
- AMX® Device Discovery
- Crestron® Integrated Partner and Crestron RoomView®
- Extron® IP Link and XTP
- PLink

Projector Details:

Interfaces:

- HDMI x 1
- DVI-D x 1
- HDBase-T x 1
- Computer: D-sub 15 pin x 2
- Video: BNC x 5
- Composite Video: BNC x 1
- Wired Network: RJ-45 x 1
- Wireless Network: Optional
- Serial: Rs-232c x 1
- Hardwired Remote Jack x 1
- Monitor-Out: D-sub 15 pin x 1
- USB Type-A: For wireless only
- USB Type-B: For service only

Speaker:

None

Fan Noise:

- ECO mode: 35 dB
- Normal mode: 37 dB

Audio Output:

None

Projector Dimensions:

Weight - with standard lens:

58 lb

Excluding feet - with standard lens:

21.02" x 29.17" x 10.04" (W x D x H)

Including feet - with standard lens:

21.02" x 29.17" x 7.76" (W x D x H)

Remote Control:

Features:

Brightness, contrast, tint, saturation, sharpness, input signal, sync, tracking, position, zoom, focus, lens shift, shutter, ID, source search, split screen

Operating Distance:

98 ft

Operating Angle:Front

- Right / Left: ± 60 degrees
- Upper / Lower: -45 to +15 degrees

Rear

- Right / Left: ± 60 degrees
- Upper / Lower: -40 to +15 degrees

Power:

Power Supply Voltage:

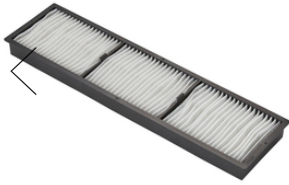
100 – 240 V $\pm 10\%$, 50/60 Hz AC

Power Consumption:

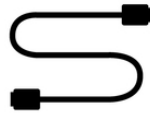
- ECO mode: 748 W
- Normal mode: 844 W
- Communication on: 2.7 W standby
- Communication off: 0.26 W standby

Accessories





Air Filters



Cables



Control Systems



Document Cameras



Support



Need Support?

Get the latest drivers, FAQs, manuals and more for your Epson product.

Recommended Links:

- [Drivers & Downloads](#)
- [FAQs](#)
- [Manuals and Warranty](#)
- [Registration](#)
- [Contact Support](#)

Notes:

* Color brightness (color light output) measured in accordance with IDMS 15.4. Color brightness will vary depending on usage conditions.

¹ Color brightness (color light output) and white brightness (white light output) will vary depending on usage conditions. Color light output measured in accordance with IDMS 15.4; white light output measured in accordance with ISO 21118.

² Consult your user manual for input combinations.

Specifications Notes:

¹ Color brightness (color light output) and white brightness (white light output) will vary depending on usage conditions. Color light output measured in accordance with IDMS 15.4; white light output measured in accordance with ISO 21118.

² Lamp life will vary depending upon mode selected, environmental conditions and usage. Lamp brightness decreases over time.

Color brightness (color light output) measured in accordance with IDMS 15.4. Color brightness will vary depending on usage conditions. Based on NPD data for June 2013 through May 2014 and PMA Research data for Q1 through Q3 2013.

© 2020 Epson America, Inc.