

OUT OF STOCK

# PowerLite L500W WXGA 3LCD Laser Projector

**Contact Us** 800.463.7766

Mon-Fri 7am-4pm PT



## Robust, compact WXGA laser projector with 5,000 lumens.

The compact, affordable PowerLite L500W laser projector delivers powerful performance for education and business applications. Get bright, vivid images with 5,000 lumens color/white brightness<sup>1</sup>. This robust projector also offers WXGA resolution for widescreen images. Featuring breakthrough laser technology, it delivers a laser light source of up to 20,000 hours<sup>2</sup>. And, it offers virtually maintenance-free operation with no lamps. Plus, it features a Dynamic contrast ratio up to 2,500,000:1. It also features advanced installation features and enterprise-level wireless security support (module sold separately).

**Model:** V11H908020

OUR PRICE :

**\$1,999.00**[Write a review](#)

## Overview

### Bright, vivid color

5,000 lumens color/white brightness<sup>1</sup>.

### Colorful, widescreen

images up to 280"  
WXGA resolution (1280 x 800)

### Breakthrough laser technology

features a laser light source of up to 20,000 hours<sup>2</sup>; plus, Instant ON/OFF

### Extraordinary sharpness and detail

up to 2,500,000:1 Dynamic contrast ratio

### Optional wireless networking with enterprise-level security

plus wireless content sharing with Epson iProjection™<sup>3</sup>; wireless module sold separately

### Virtually maintenance-free operation

no lamps

- **Versatile connectivity** — supports 2x HDMI®, VGA, RJ-45, stereo mini and more
- **Advanced installation features** — 360-degree flexibility and geometric correction tools such as horizontal and vertical keystone, arc correction, Quick Corner® and more
- **Constant Brightness Mode<sup>4</sup>** — fine-tune the brightness setting to help maximize run time
- **Remote management and control tools** — compatible with Crestron®, AMX®, PJLink and more; offers easy access and maintenance

## Eco Features

- RoHS compliant
- Recyclable product<sup>5</sup>
- Epson America, Inc. is a SmartWay™ Transport Partner<sup>6</sup>

### Better Products for a Better Future™

For more information on Epson's environmental programs, go to [www.epson.com/environment](http://www.epson.com/environment)

## IMPORTANT SAFETY INFORMATION ABOUT USAGE ENVIRONMENTS FOR MOUNTED PROJECTORS ►

## What's In The Box:

- PowerLite L500W Projector
- Power cord
- Computer cable (VGA)
- Remote control and batteries
- Quick setup poster

## Specifications

### Specifications Projector:

---

**Projection System:**

RGB Liquid Crystal Shutter Projection System

**Projection Method:**

Front, Front/Ceiling, Rear, Rear/Ceiling

**LCD Screen:**

0.59" (D8 with C<sup>2</sup>Fine™)

**Driving Method:**

Poly-silicon TFT Active Matrix

**Pixel Number:**

1,024,000 dots (1280 x 800) x 3

**Color Brightness - Color Light Output:**

5,000 lumens<sup>1</sup>

**White Brightness - White Light Output:**

5,000 lumens<sup>1</sup>

**Aspect Ratio:**

16:10

**Resolution:**

1280 x 800 (WXGA)

**Throw Ratio Range:**

1.38–2.24

**Size - projected distance:**

60" screen: 1.79–2.92 m

**Keystone Correction:**

Vertical: ±30 degrees; Horizontal: ±30 degrees

**Contrast Ratio:**

Up to 2,500,000:1

**Color Processing:**

10 bit

**Color Reproduction:**

Up to 1.07 billion colors

**Light Source Life:**

Normal: 20,000 hours; Quiet: 20,000 hours; Extended: 30,000 hours

**Illumination Technology:**

Laser Diode

### Effective Scanning Frequency Range:

---

**Pixel Clock:**

Analog: 13.5–162 MHz (up to UXGA 60 Hz)

Digital: 13.5–162 MHz (up to UXGA 60 Hz)

**Horizontal:**

Analog: 15–92 kHz

Digital: 15–75 kHz

**Vertical:**

Analog: 50–85 Hz

Digital: 24/30/50/60 Hz

## Projection Lens:

---

**Type:**

Optical Zoom (Manual)/Focus (Manual)

**F-number:**

1.5–1.7

**Screen Size:**

Zoom: Wide: 29"–280" [0.85–8.45 m]; Zoom: Tele: 29"–280" [1.40–13.71 m]

**Focal Length:**

18.2–29.2 mm

**Zoom Ratio:**

1–1.6

**Lens Cover:**

Lens cap (without string)

## Projector Details:

---

**Interfaces:**

- 2x HDMI
- Analog: D-sub 15 pin
- 1x Control I/O: RS-232C D-sub 9 pin
- USB-I/O: Type A 1x; Type B 1x
- Wired LAN RJ45
- Wireless LAN Optional Accessory
- Audio in (stereo): 2x
- Audio out (stereo): 1x

**Fan Noise:**

Normal: 37 dB; ECO: 25 dB

## Projector Dimensions:

---

**Including feet:**

17.32" x 11.97" x 5.35" (W x D x H)

**Excluding feet:**

17.32" x 11.97" x 4.73" (W x D x H)

**Weight - with standard lens:**

Approx. 16.3 lb/7.4 kg

## Remote Control:

---

**Operating Distance:**

8 m

**Operating Angle:**

- Front: Right/Left:  $\pm 60$  degrees; Upper/Lower: +30 to -20 degrees
- Rear: Right/Left:  $\pm 30$  degrees; Upper/Lower: +50 to +10 degrees

## Power:

---

**Power Supply Voltage:**

100 – 240 V  $\pm 10\%$ , 50/60 Hz AC

**Power Consumption:**

Normal: 337 W; Quiet: 254 W; Networked Standby 2.0 W; Energy Saving: 0.3 W

---

Reviews 

## Reviews

★★★★★

[Be the first to review this product](#)

---

Accolades 

## Epson Products Win The Best Of InfoComm 2019 From RAVE Publications

Best System Projector: Epson PowerLite L Series

[Read More](#) 

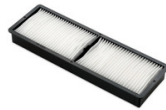
---

Accessories 

---



Accessories



Air Filters



Cables



Connectivity



Control Systems

Support

## Need Support?

Get the latest drivers, FAQs, manuals and more for your Epson product.

### Recommended Links:

- [Drivers & Downloads](#)
- [FAQs](#)
- [Manuals and Warranty](#)
- [Registration](#)
- [Contact Support](#)

### Notes:

<sup>1</sup> Color brightness (color light output) and white brightness (white light output) will vary depending on usage conditions. Color light output measured in accordance with IDMS 15.4; white light output measured in accordance with ISO 21118.

<sup>2</sup> No required maintenance for the light source up to 20,000 hours. Approximate time until brightness decreases 50% from first usage. Measured by acceleration test assuming use of 0.04 - 0.20 mg/m<sup>3</sup> of particulate matter. Time varies depending on usage conditions and environment. Replacement of parts other than the light source may be required in a shorter period. The projector comes with a 3-year limited warranty.

<sup>3</sup> For wireless functionality, including via the Epson iProjection App, the projector must be configured on a network, either through the Ethernet port on the projector (check model specifications for availability) or via a wireless connection. Check your owner's manual to determine if a wireless LAN module must be purchased separately to enable a wireless connection. Not all Epson projectors are able to be networked. The Epson iProjection App does not support all files and formats. See [www.epson.com](http://www.epson.com) for details.

<sup>4</sup> Color light output and white light output (lumens) in Constant Brightness Mode can be lower than the maximum output achievable when the Constant Brightness Mode is off. Actual run time may vary depending on environmental conditions, usage and settings.

<sup>5</sup> For convenient and reasonable recycling options, visit [www.epson.com/recycle](http://www.epson.com/recycle)

<sup>6</sup> SmartWay is an innovative partnership of the U.S. Environmental Protection Agency that reduces greenhouse gases and other air pollutants and improves fuel efficiency.

**IMPORTANT SAFETY INFORMATION ABOUT USAGE ENVIRONMENTS FOR MOUNTED PROJECTORS ►**

© 2020 Epson America, Inc.