

PowerLite 2247U Wireless Full HD WUXGA 3LCD Projector

Contact Us 800.463.7766

Mon-Fri 7am-4pm PT



Full HD WUXGA portable projector with advanced wireless security.

Bring brilliant high-definition performance to nearly any boardroom or conference room with the PowerLite 2247U portable projector. Offering remarkable color accuracy, Epson® projectors deliver high Color Brightness¹. Featuring native WUXGA resolution and Full HD 1080p support, plus 4,200 lumens of color/white brightness², the PowerLite 2247U shines bright in a variety of environments. And, it features great contrast. This powerhouse also supports wireless screen mirroring, with integrated enterprise-level security for added peace of mind, plus a long-lasting lamp and remote management and control tools.

Projection System: High-aperture Epson 3LCD, 3-chip technology

Native Resolution: WUXGA resolution (1920 x 1200)

Color Brightness: 4200 lumens¹

White Brightness: 4200 lumens¹

Throw Distance Calculator

Model: V11H881020

OUR PRICE :

\$1,449.00[Write a review](#)

Overview

Bright and Colorful

Features 4200 lumens of color brightness (color light output)¹ and 4200 lumens of white brightness (white light output)¹.

Wireless Ready

Includes a high-speed LAN module for wireless connectivity

WUXGA Resolution

1920 x 1200 Full HD widescreen resolution

HDMI / MHL Connectivity

Stream 1080p content and mirror your mobile device with MHL & the latest in connectivity. Get instant access to movies, games and more from MHL-enabled devices.

iProjection App

Compatible

Wirelessly project from your iPhone®, iPad®, iPod® Touch or Android™ mobile device.

Speaker Included

Includes a built-in speaker for lifelike sound

- **Remarkable color accuracy** — High Color Brightness¹ and wide Color Gamut³ with Epson
- **More accurate, vivid color, even in well-lit rooms** — 4,200 lumens of equal color and white brightness²
- **Full HD, widescreen images up to 300"** — WUXGA resolution (1920 x 1200); Full HD 1080p support
- **Remarkable sharpness and detail** — 15,000:1 contrast ratio; added clarity when displaying text and graphics
- **Robust integrated wireless networking** — enterprise-level security for added peace of mind; compatible with WEP, WPA, WPA2-PSK and WPA2-EAP security protocols
- **Wireless mirroring** — stream content using Miracast® for Android™/Windows® 8.1+ devices, or AirPlay® for iOS® devices (requires Apple TV®)
- **Long-lasting lamp** — up to 12,000 hours in ECO Mode⁴
- **Remote management and control tools** — compatible with Crestron®, AMX®, Extron®, PJLink and more; offers easy access and maintenance
- **Two-way content sharing** — presenters can push content from the projector to wirelessly connected devices and control which device screens to display; participants can make notes and send their work back to the projector⁵
- **Versatile, compact design** — multiple connectivity options; ideal for transporting between or installing in small- to medium-sized spaces

Eco Features

- RoHS compliant
- Recyclable product⁶
- Epson America, Inc. is a SmartWay™ Transport Partner⁷

Better Products for a Better Future™

For more information on Epson's environmental programs, go to www.epson.com/environment

IMPORTANT SAFETY INFORMATION ABOUT USAGE ENVIRONMENTS FOR MOUNTED PROJECTORS ►

What's In The Box:

- PowerLite 2247U projector
- remote control
- batteries
- power cable
- computer cable (VGA)
- warranty card
- Quick Setup Sheet

Specifications ►

Specifications Projector:

Projection System:

3LCD, 3-chip technology

Projection Method:

Front/rear/ceiling mount

Driving Method:

Poly-silicon TFT Active Matrix

Pixel Number:

2,304,000 dots (1920 x 1200) x 3

Color Brightness - Color Light Output:

4,200 lumens

White Brightness - White Light Output:

4,200 lumens

Aspect Ratio:

16:10

Resolution:

1920 x 1200 (WUXGA)

Supported Resolution:

1920 x 1080 (1080p)

Resize:

640 x 480, 800 x 600, 1280 x 1024, 1400 x 1050

Lamp Type:

230 W UHE

Lamp Life:

Up to 12,000 hours (ECO Mode), Up to 5,500 hours (Normal Mode)⁴

Throw Ratio Range:

1.39 (Zoom: Wide), 2.23 (Zoom: Tele)

Size - projected distance:

45" – 260" (2.49 – 14.53 m) (Zoom: Wide)

Keystone Correction:

Vertical: \pm 30 degrees, Horizontal: \pm 20 degrees

USB Plug 'n Play:

Projector is compatible with PC and Mac® computers

Contrast Ratio:

Up to 15,000:1

Color Reproduction:

Up to 1.07 billion colors

General:

Operating Temperature:

41 ° to 95 °F (5 ° to 35 °C)

Weight:

7.05 lb (3.2 kg)

Wireless:

Mode:

Quick Mode: OPEN, WPA2-PSK

Advanced Mode: OPEN, WPA2-PSK, WPA/WPA2-PSK

Supported Speeds:

IEEE 802.11b: 11 Mbps*

IEEE 802.11g: 54 Mbps*

IEEE 802.11n: 130 Mbps*

*Maximum speed and range is achievable when used with same enhanced mode technology. Actual data rates, features and performance may vary depending on your computer system, the environment and other factors.

Projection Lens:

Type:

Optical Zoom (Manual)/Focus (Manual)

F-number:

1.5 – 1.9

Focal Length:

20.3 – 32.5 mm

Zoom Ratio:

1.0 – 1.6

Projector Details:

Input Signal:

Auto, RGB, and Component

Interfaces:

- 1 x HDMI®
- 1x HDMI/MHL®
- Computer: 2x D-sub 15 pin
- Video: 1x RCA
- Audio-in: 3x Mini stereo
- Audio-in: 1x RCA (L & R)
- Network: 1x RJ-45, 100
- Mbps Serial: 1x RS-232c
- Monitor Out: 1x D-sub 15 pin

Speaker:

16 W (mono)

Projector Dimensions:

Including feet:

14.85" x 11.48" x 4.93"

Excluding feet:

14.85" x 11.46" x 4.33"

Remote Control:

Features:

Brightness, Contrast, Tint, Saturation, Sharpness, Input signal, Sync, Tracking, Position, Color temperature, Volume

Operating Distance:

26.2 ft (8 m)

Operating Angle:

Right/left: ± 45 degrees, Upper/lower: +45 to -15 degrees

Power:

Power Supply Voltage:

100 – 240 V AC ±10%, 50/60 Hz

Power Consumption:

- 350 W (Normal Mode)
- 237 W (ECO Mode)
- 2.0 W Standby (Communication On)
- 0.21 W Standby (Communication Off)

Reviews 

Reviews

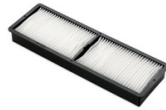


Be the first to review this product

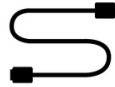
Accessories ▶



Accessories



Air Filters



Cables



Cases



Connectivity



Cc

Support ▶

Need Support?

Get the latest drivers, FAQs, manuals and more for your Epson product.

Recommended Links:

- Drivers & Downloads
- FAQs
- Manuals and Warranty
- Registration
- Contact Support

Notes:

¹ Color brightness (color light output) in brightest mode, measured by a third-party lab in accordance with IDMS 15.4. Color brightness will vary depending on usage conditions.

² Color brightness (color light output) and white brightness (white light output) will vary depending on usage conditions. Color light output measured in accordance with IDMS 15.4; white light output measured in accordance with ISO 21118.

³ Gamut volume in brightest mode, measured by a third-party lab in 3D in the CIE L*a*b* coordinate space.

⁴ ECO Mode is up to 12,000 hours. Normal Mode is up to 5,500 hours. Lamp life will vary depending upon mode selected, environmental conditions and usage. Lamp brightness decreases over time.

⁵ For wireless functionality, including via the Epson iProjection™ App, the projector must be configured on a network, either through the Ethernet port on the projector (check model specifications for availability) or via a wireless connection. Check your owner's manual to determine if a wireless LAN module must be purchased separately to enable a wireless connection. Not all Epson projectors are able to be networked. The Epson iProjection App does not support all files and formats. See www.epson.com for details.

⁶ For convenient and reasonable recycling options, visit www.epson.com/recycle

⁷ SmartWay is an innovative partnership of the U.S. Environmental Protection Agency that reduces greenhouse gases and other air pollutants and improves fuel efficiency.

IMPORTANT SAFETY INFORMATION ABOUT USAGE ENVIRONMENTS FOR MOUNTED PROJECTORS ►

© 2020 Epson America, Inc.