

OUT OF STOCK

PowerLite 118 3LCD XGA Classroom Projector with Dual HDMI

Contact Us 800.463.7766

Mon-Fri 7am-4pm PT



Enhance your classroom with ultra bright, 3,800-lumen projection¹

Enrich lesson plans with the ultra bright PowerLite 118 projector. Built with advanced 3LCD technology, this dynamic XGA projector displays vibrant images with 3,800 lumens of color and white brightness¹. Featuring an integrated Moderator function², the PowerLite 118 allows up to 50 users to connect to the display and share content from laptops or mobile devices³. A durable and reliable solution, it features a long lamp life up to 17,000 hours⁴, a 16 W speaker, a microphone input, and dual HDMI ports to support versatile and engaging projection in a variety of learning environments.

- 3,800 lumens of color and white brightness¹
- Native XGA resolution and 4:3 performance
- Long lamp life up to 17,000 hours in ECO Mode⁴
- Built-in Moderator function² for easy sharing
- Advanced network connectivity
- **THROW DISTANCE AND DISPLAY SIZE CALCULATORS ►**

Model: V11HA03020

OUR PRICE :

\$519.00[Write a review](#)

Overview

3-chip 3LCD technology for Best-in-Class Color Brightness⁵
3,800 lumens of color and white brightness¹

Native XGA resolution and a 4:3 aspect ratio
for vibrant, colorful images

Low-priced, long-lasting lamp
up to 17,000 hours in ECO Mode⁴

Moderator function²
allows up to 50 users to connect to the display simultaneously; perfect for displaying a variety of content or comparing students' work side-by-side

Advanced network connectivity
RJ-45 allows remote network projector management, presentations over the network, and more

Project from laptops and mobile devices
wirelessly display from PC, Mac[®], Chromebook[™], iOS[®] and Android[™] devices³

- **Easy setup and positioning flexibility** — offers 1.2x optical zoom, ±30 degrees horizontal and vertical keystone correction, and Quick Corner[®]
- **Dual HDMI ports** — supports multiple high-definition AV devices
- **Built-in 16 W speaker and microphone input** — for engaging projector displays
- **Screen size up to 300"** — with Split Screen⁶ capability for side-by-side viewing

Eco Features

- RoHS compliant
- Recyclable product⁷
- Epson America, Inc. is a SmartWay[™] Transport Partner⁸

Better Products for a Better Future[™]

For more information on Epson's environmental programs, go to www.epson.com/environment

IMPORTANT SAFETY INFORMATION ABOUT USAGE ENVIRONMENTS FOR MOUNTED PROJECTORS ►

What's In The Box:

- PowerLite 118 Projector
- Power cord

- Computer cable (VGA)
- Projector remote control
- Batteries
- User Manual CD
- Software CD
- Quick setup sheet
- Warranty card
- Password protect sticker

Specifications

Specifications Projector:

Projection System:

3LCD, 3-chip technology

Projection Method:

Front / rear / ceiling mount

Driving Method:

Poly-silicon TFT Active Matrix

Pixel Number:

786,432 dots (1024 x 768) x 3

Color Brightness - Color Light Output:

3800 lumens¹

White Brightness - White Light Output:

3800 lumens¹

Aspect Ratio:

4:3

Resolution:

1024 x 768 (XGA)

Resize:

640 x 480 (VGA), 800 x 600 (SVGA), 1280 x 800 (WXGA), 1280 x 960 (SXGA2), 1280 x 1024 (SXGA3), 1366 x 768 (WXGA60-3), 1400 x 1050 (SXGA+), 1440 x 900 (WXGA+), 1680 x 900 (WXGA++), 1600 x 1200 (UXGA60)

Lamp Type:

210 W UHE

Lamp Life:

- ECO mode: Up to 17,000 hours⁴
- Medium mode: Up to 10,000 hours⁴
- Normal mode: Up to 8,000 hours⁴

Throw Ratio Range:

1.48 (Zoom:Wide), 1.77 (Zoom:Tele)

Size - projected distance:

30" to 300" (0.89 to 9.12 m) (Zoom:Wide)

Keystone Correction:

- Vertical: ± 30 degrees (Automatic)
- Horizontal: ± 30 degrees (Slider)

USB Plug 'n Play:

Projector is compatible with PC and Mac® computers

Contrast Ratio:

Up to 16,000:1

Color Processing:

10 bit

Color Reproduction:

Up to 1.07 billion colors

General:

Temperature:

41° to 95° F (5° to 35° C)

Weight:

6.17 lb (2.8 kg)

Security:

- Kensington®-style lock provision
- Padlock
- Security anchor bar

Power:

Power Supply Voltage:

100 – 240VAC $\pm 10\%$, 50 / 60Hz AC

Power Consumption:

- ECO mode: 235 W
- Normal mode: 345 W
- Communication on: 2.0 W Standby
- Communication off: 0.3 W Standby

Projection Lens:

Type:

Manual focus

F-number:

1.49 – 1.72

Focal Length:

16.9 mm – 20.28 mm

Zoom Ratio:

1.0 – 1.2

Remote Control:

Features:

A/V Mute, Freeze, Split, Aspect, Color Mode, Auto, MHL Menu, Volume

Operating Distance:

19.7' (6 m)

Operating Angle:

- Right / Left: ± 30 degrees
- Upper / Lower: ± 15 degrees

Projector Dimensions:

Including feet:

11.8" x 9.8 x 3.4" (W x D x H)

Excluding feet:

11.6" x 10.2" x 3.6" (W x D x H)

Projector Details:

Display Performance:

- NTSC: 480 lines
- PAL: 576 lines
(Depends on observation of the multi-burst pattern)

Input Signal:

NTSC / NTSC4.43 / PAL / M-PAL / N-PAL / PAL60 / SECAM

Interfaces:

- 1x USB-A
- 1x USB-B
- 1x LAN
- 2x HDMI
- 2x Computer/Component
- 1x Video
- 1x RS-232c
- 1x Stereo Mini-jack (Mic)
- 1x Monitor Out
- Audio 1 & 2
- Audio L & R
- 1x Audio Out
- Wireless LAN port: 802.11 b/g/n (optional – module sold separately)

Speaker:

16 W (mono)

Fan Noise:

- ECO mode: 28 dB
- Normal mode: 37 dB

Eco Features:

- RoHS compliant
- Recyclable product⁷
- Epson America, Inc. is a SmartWaySM Transport Partner⁸

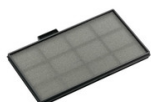
Reviews ▶

Reviews



Be the first to review this product

Accessories ▶



Air Filters



Cables



Cases



Document
Cameras



Lamp

Notes:

¹ Color brightness (color light output) and white brightness (white light output) will vary depending on usage conditions. Color light output measured in accordance with IDMS 15.4; white light output measured in accordance with ISO 21118.

² Moderator control, Connecting via QR code and Projector Remote are not available on Epson iProjection™ for Chromebooks.

³ For wireless functionality, including via the Epson iProjection App, the projector must be configured on a network, either through the Ethernet port on the projector (check model specifications for availability) or via a wireless connection. Check your owner's manual to determine if a wireless LAN module must be purchased separately to enable a wireless connection. Not all Epson projectors are able to be networked. The Epson iProjection App does not support all files and formats. See www.epson.com for details.

⁴ Lamp life will vary depending upon mode selected, environmental conditions and usage. Lamp brightness decreases over time.

⁵ Color brightness measured per IDMS 15.4. Additional colors and picture modes tested. Top-selling Epson 3LCD projectors vs. comparable top-selling 1-chip DLP projectors based on NPD sales data for May 2017 – April 2018. COLOR BRIGHTNESS WILL VARY BASED ON USAGE CONDITIONS.

⁶ Split Screen feature requires remote control. Consult your user manual for input combinations.

⁷ For convenient and reasonable recycling options, visit www.epson.com/recycle

⁸ SmartWay is an innovative partnership of the U.S. Environmental Protection Agency that reduces greenhouse gases and other air pollutants and improves fuel efficiency.

IMPORTANT SAFETY INFORMATION ABOUT USAGE ENVIRONMENTS FOR MOUNTED PROJECTORS ►

© 2020 Epson America, Inc.