



User Manual - Getting Started

To be read in conjunction with the SD Series Software Reference

User Manual Version E for Software Versions 5.0.680+

Copyright © 2014 Digico UK Ltd

All rights reserved.

No part of this publication may be reproduced, transmitted, transcribed, stored in a retrieval system, or translated into any language in any form by any means without the written permission of Digico UK Ltd. Information in this manual is subject to change without notice, and does not represent a commitment on the part of the vendor. Digico UK Ltd shall not be liable for any loss or damage whatsoever arising from the use of information or any error contained in this manual.

All repair and service of the SD8 product should be undertaken by Digico UK Ltd or its authorised agents. Digico UK Ltd cannot accept any liability whatsoever for any loss or damage caused by service, maintenance, or repair by unauthorised personnel.

Software License Notice

Your license agreement with Digico UK Ltd, which is included with the SD8 product, specifies the permitted and prohibited uses of the product. Any unauthorised duplication or use of Digico UK Ltd software, in whole or in part, in print or in any other storage and retrieval system is prohibited.

Licenses and Trademarks

The SD8 logo and SD8 name are trademarks, and Digico UK Ltd and the Digico UK Ltd logo are registered trademarks of Digico UK Ltd. Microsoft is a registered trademark and Windows is a trademark of Microsoft Corp.

Digico (UK) Ltd
Unit 10
Silverglade Business Park
Leatherhead Road
Chessington
Surrey
KT9 2QL
England
Telephone: +44 (0)1372 845600
Fax: +44 (0)1372 845656
Email: sales@digiconsoles.com
WWW: http://www.digiconsoles.com

Manual Issue and Date: Issue E - April 2014 - For Version 5.0.680+ Software

Licence Agreement

"Product": SD8 software product produced by Digico UK Ltd intended for use on Target Platform identified below.

"Target Platform": Digico SD8 Digital Console system.

In return for the payment of the one-time fee, the Customer (identified at the end of this Agreement) receives from Digico UK Ltd a licence to use the Product subject to the following terms and conditions.

1. The Product may be used without time limit by the Customer on the Target Platform.
2. The Customer must register the Product with Digico UK Ltd. Registering the Product is deemed an acceptance of the terms and conditions in this agreement.
3. The Product and its licence are not transferable, and the Customer is not permitted to onward-license to any third party. The Customer indemnifies Digico UK Ltd against any and all claims and actions arising from third party use of copies of the Product made by the Customer.
4. The Customer agrees not to attempt to decompile the object code of the Product otherwise than in circumstances specifically provided for by law, and then only after consultation with Digico UK Ltd.
5. The Customer agrees not to use, or licence the Product for use, with equipment other than the Target Platform.
6. The Customer agrees not to modify the Product without the prior written consent of Digico UK Ltd.
7. This Agreement applies to any enhancement or upgrades that may become available for the Product.
8. This Agreement does not transfer any right, title, or interest in the Product to Customer except as specifically set forth herein.
9. Digico UK Ltd reserves the right to terminate this Agreement upon breach, in which event Customer shall thereafter only be authorised to use the Product to the extent that its contractual commitments to third parties require and then only where such commitments relate to use of the Product as authorised in the foregoing provisions of the Agreement.

LIMITED WARRANTY - Digico UK Ltd warrants for a period of 1 year from the date of purchase of the Product, the Product will reasonably execute its programming instructions when properly installed on the Target Platform. In the event that this Product fails to execute its programming instructions during the warranty period, the Customer's remedy shall be to return the Product to Digico UK Ltd for replacement or repair at Digico UK Ltd option. Digico UK Ltd makes no other express warranty, whether written or oral with respect of this Product.

LIMITATION OF LIABILITY - Except as otherwise expressly provided by law, (a) the remedies provided above are the Customer's sole and exclusive remedies and (b) Digico UK Ltd shall not be liable for any direct, indirect, special, incidental, or consequential damages (including lost profit whether based on warranty, contract, tort, or any other legal theory.)

This agreement is made under the Laws of England.

LICENCE NO:

REGISTRATION DATE:

Contents

1.1 Introduction	1-1
1.2 Manual Overview	1-1
1.3 Before You Start	1-2
1.3.1 Worksurface Layout	1-2
1.3.2 Screen Assignment	1-3
1.3.3 Layers and Banks	1-4
1.3.4 Using the Control Surface	1-4
1.3.5 The Assigned Channel	1-5
1.3.6 The Master Fader	1-6
1.3.7 Other Centre Section Controls	1-6
1.3.8 Channel Types	1-6
1.4 Hardware Configuration.....	1-7
1.4.1 Connections.....	1-7
1.4.2 Audio I/O Panel	1-9
1.4.3 Opto V220 (DiGiRacks) and Opto V221 (SD Racks)	1-10
1.4.4 Single SD Console System	1-10
1.4.5 Rack Connections	1-10
1.4.6 Rack Sharing	1-11
1.5 Configuring a Session	1-12
1.5.1 Session Structure	1-12
1.5.2 Assigning Faders to the Worksurface.....	1-13
1.6 Saving and Loading Sessions	1-14
1.7 Audio Sync	1-15
1.8 Routing Basics	1-16
1.8.1 Selecting Inputs & Outputs	1-16
1.8.2 Ripple Channels	1-17
1.8.3 Channel Names	1-17
1.9 Channel Processing	1-18
1.9.1 EQ	1-18
1.9.2 Dynamics.....	1-19
1.9.3 Auxiliaries	1-20
1.10 The Matrix	1-21
1.11 Control Groups.....	1-22
1.12 Solo Setup.....	1-23

1.1 Introduction

The Digico SD8 consists of a worksurface with an onboard audio engine and a range of onboard inputs and outputs. This can be connected to multiple Input/Output Rack Units by MADI links or optical fibre (optionally) which carry all the audio input and output signals.

The console worksurface consists of 3 sections that can control 60 mono or stereo input channels, 12 VCAs, up to 24 mono or stereo busses, 16 Matrix inputs and 12 Matrix outputs, 12 onboard graphic EQs and 12 onboard stereo effects.

The left section has 12 assignable faders and 12 sets of assignable encoders and switches.

The centre section has, a touchscreen, 12 assigned encoders, 12 assignable faders, 12 sets of assignable encoders and switches, a full set of channel processing controls and a master fader.

The right section has 12 assignable faders, 12 sets of assignable encoders and switches and controls for monitoring, headphones, talkback, macros and snapshots.

Any of these worksurface sections can be assigned to the centre touchscreen.

Multiple console setups can provide:

Front of House and Monitoring with shared stage racks and gain tracking.

Remote control of a console from a laptop computer.



1.2 Manual Overview

This manual provides an overview of the desk, and describes some of the basic operating principles which the user will need to understand in order to run the desk.

For full details on all SD software functionality please refer to the SD Series Software Reference Manual available for download at www.digico.biz

The following typographical convention used in this manual: An arrow bracket (>) is used to indicate a sequence of button pressing.

For example, **Layout > Fader Banks** indicates that the **Fader Banks** button is accessed by first pressing the **Layout** button.

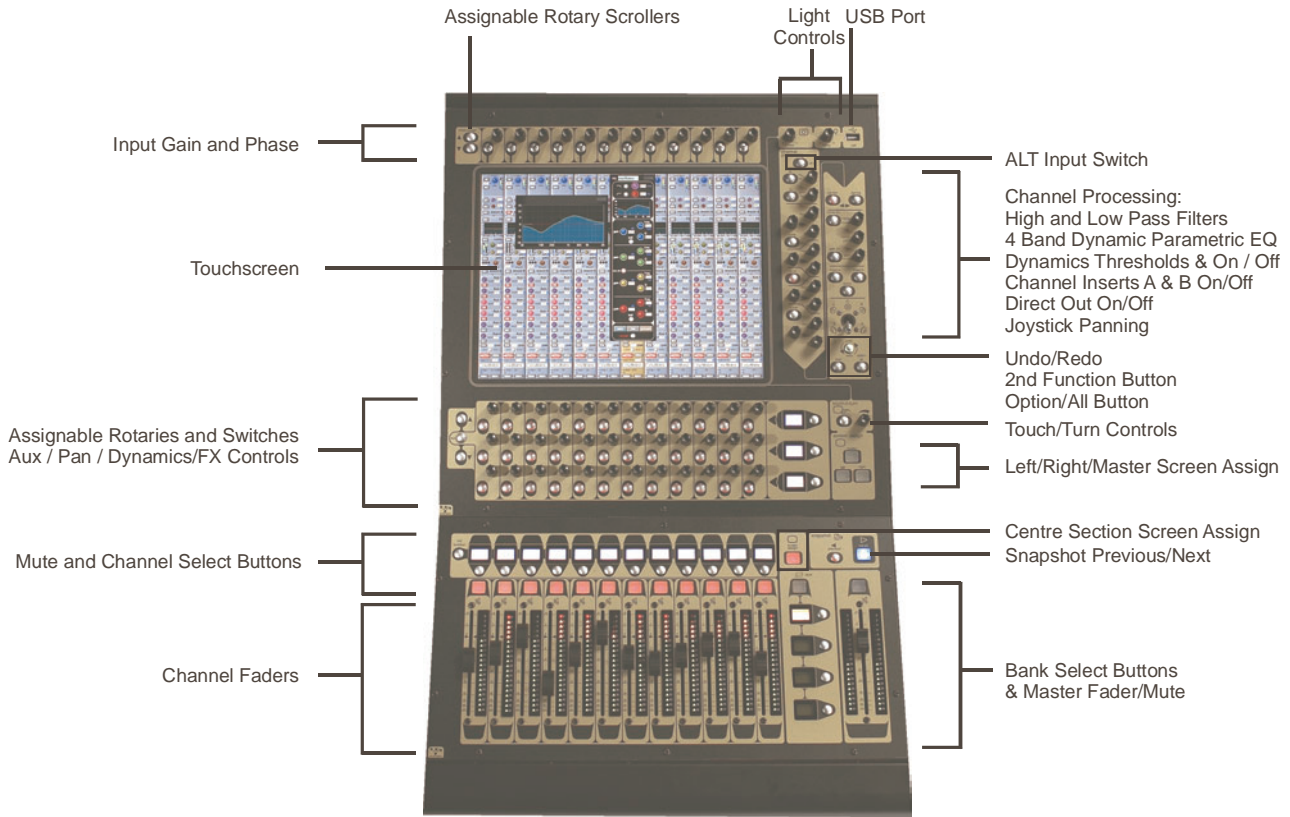
SD8 - Getting Started

1.3 Before You Start

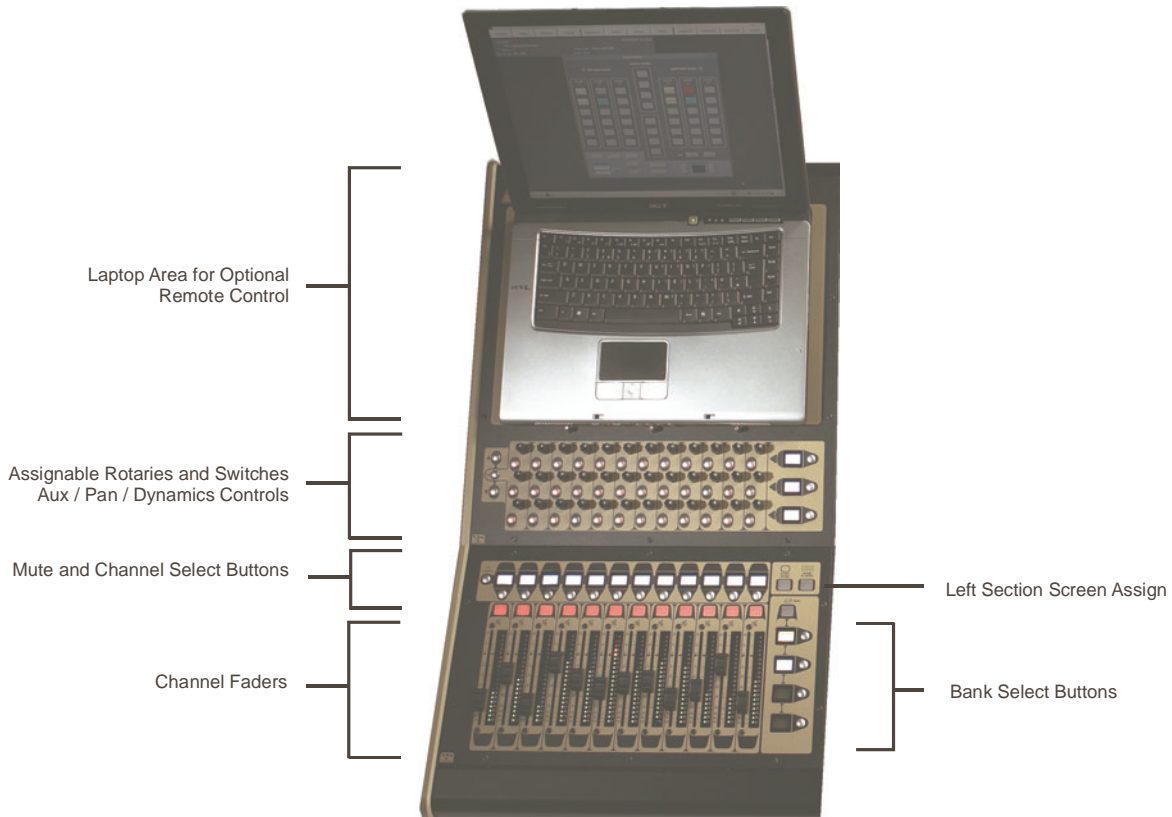
There are certain general operating principles and terms that should be understood before continuing to use this manual. Please read this chapter carefully before proceeding.

1.3.1 Worksurface Layout

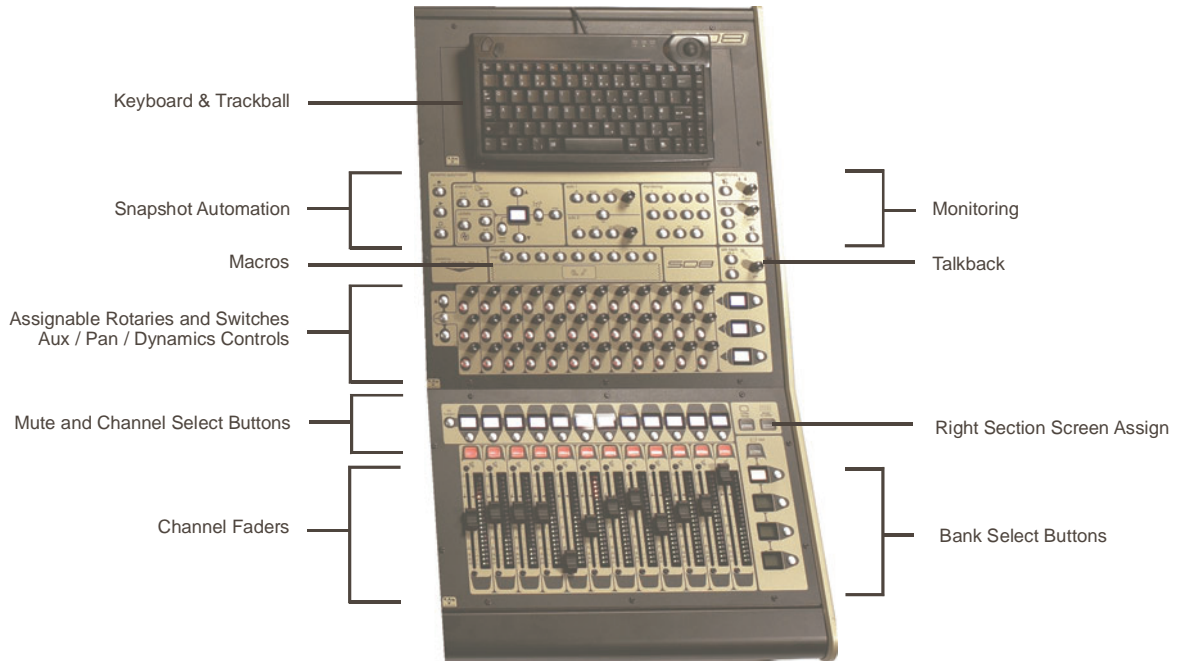
Centre Section



Left Section (Optional - not on SD8 24)

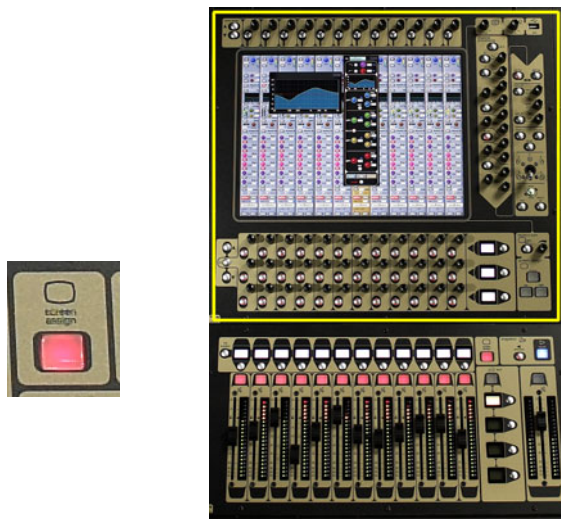


Right Section



1.3.2 Screen Assignment

The SD8 has one central touchscreen which is used to access many of the consoles functions. There are 4 possible views that can be seen on this screen - Left section - Centre section - Right section - Master screen. Each console worksurface section has its own **Screen Assign** button which, when pressed, will allow the channels in that section to be viewed on the screen and controlled by the Centre section's Channel Processing controls such as EQ and Dynamics. When the button is lit, that section is assigned to the screen. When a section has been assigned to the screen all of the controls in the upper centre section are also assigned - these controls are highlighted in the picture below.



The Left and Right worksurface sections also each have a button labelled **Assign To Centre** which will allow all of the Centre sections controls including faders, mutes and solos to control the bank which has been selected in the Left or Right sections..

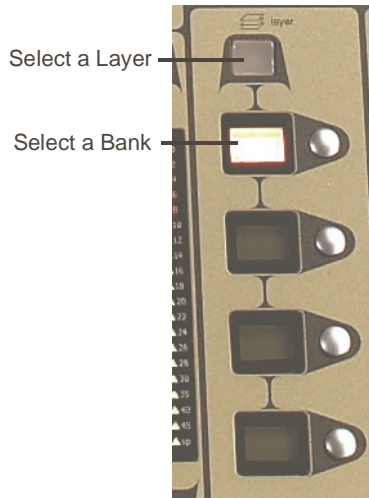


There are also additional buttons in the centre section which can assign the Left and Right sections to the screen and a **Master** button which allows you to view the Master screen. The Master screen gives access to many setup and other functions which are not directly related to the console's channels.



1.3.3 Layers and Banks

The SD8's worksurface is divided into Layers and Banks. Each Bank contains twelve channels, and the channels which are currently active on the control surface are defined using the **fader bank** and **bank layer** buttons to the right of the Channel Strip section's faders:



A 'bank' is a set of twelve faders, and a 'layer' contains up to four 'banks'. There are two 'layers' in each section of the desk, allowing up to 288 channels to be accessible on the worksurface.

Pressing the **bank layer** button, located above the **fader bank** buttons, toggles between layers.

To access a bank of faders within that layer, press the appropriate **fader bank** button. To switch all three sections of the console to the same bank level, press and hold one of the **fader bank** buttons.

The position of the banks on the worksurface is defined in the **Layout > Fader Banks** panel. By default, the Input channels will be assigned to Layer 1 on the left and right sections of the console. The different output channels will be assigned to Layer 1 on centre section. Control Groups will also be assigned to the centre section. These bank assignments can be customised by the user and saved in a session at any time.

1.3.4 Using the Control Surface

There are two main ways in which all of the functions of the SD8 are accessed:

1. The touchscreen display, which can be controlled directly using a finger, or by using the keyboard and mouse
2. The physical encoders, switches and faders.

Note that when touching the screen directly, you may find it easier to use a finer point than your finger. However, in order to prevent damage to the screen, it is important that you only use devices specifically designed for touching screens (such as a pda stylus), and that you never press down hard on the screen.

A number of functions can be accessed in different ways, allowing users to operate the console using whichever interface they prefer. This manual will describe accessing on-screen functions by touching the screen directly and not by using the mouse.

All of the physical controls found in the centre section are described in full within the relevant section of the manual and many require no further introduction. The Master screen has a row of grey buttons which are used to access a range of configuration displays. Pressing these buttons opens either a further drop-down sub-menu or a pop-up display. If a drop-down menu is opened, pressing on one of its entries will open a pop-up display. The buttons lighten to indicate that their sub-menu or pop-up display is open. A number of the buttons within each pop-up display generate further pop-ups.

The buttons within the pop-ups are coloured grey when their function is inactive, generally switching to a lighter shade of the pop-up background when their function is active. Pressing on a text box opens a numeric or QWERTY keypad which can be operated directly by pressing the screen or via the console's external keyboard.

Pop-ups are closed by pressing the box in the top right-hand corner of the pop-up, marked **CLOSE** or **CANCEL** (or by pressing **CAN** on keypad pop-ups).

To the right and below the Master screen is a single encoder marked Touch-Turn (shown below). This is used to access some of the rotary and switch controls within the Master screen. To assign the Touch-Turn encoder to a particular on-screen pot, touch the pot to be assigned. You will notice that a coloured ring appears around the on-screen pot, indicating that it is assigned to the Touch-Turn encoder/switch.

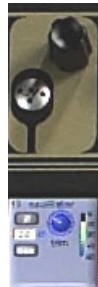


1.3.5 The Assigned Channel

One of the channels in the Channel Strip panel is displayed in gold, indicating that it is currently the Assigned Channel. This means that it has been assigned to the worksurface controls and can be configured in detail, as described below. To Assign a channel, touch anywhere in the channel on the screen.

Once a channel is Assigned, all of the controls for that channel which are not displayed within the channel strip itself can be accessed via secondary pop-ups, displayed by touching inside the relevant area of the channel. These pop-ups include controls such as input and output routing and signal processing parameters.

A number of the physical rotary encoders on the control surface can be assigned to different on-screen pots. In order to ensure that it is clear which function is assigned to which encoder, the assigned on-screen pot will have a coloured ring around it.



The twelve encoders and buttons immediately above the touchscreen (shown above) refer to the channels with which they are aligned. These controls are concerned with the channel input, located at the top of the Channel Strip panel.

The three rows of encoders and buttons immediately below the touchscreen also refer to the channels with which they are aligned. Normally, these control the level and on/off status of the three highlighted aux sends, but can have a number of functions assigned to them. Touching on an aux send on the screen will assign that aux and the ones immediately below it to the aux encoders. Six aux sends can be displayed in the Channel Strip panel at any one time. If more than six aux sends have been created in the session, the scroll button outside the bottom left-hand corner of the screen can be used to scroll the display through the remaining auxiliaries:



The controls to the right of the Channel Strip panel allow the Assigned channel to be adjusted:



SD8 - Getting Started

1.3.6 The Master Fader

By default, the master fader is assigned to the master group output, which is the lowest stereo group output by default. In addition, the master fader can be assigned to the solo buss output.

1.3.7 Other Centre Section Controls



To the left of the Channel Strip panel are more channel controls: When pressed, the **2nd function** button allows access to different parameters:

- 1) Stereo Aux Pan and Pre/Post switching
- 2) Hard Mute of a channel
- 3) Fine adjustment of Delay settings on output channels

2nd function is indicated by a green **2nd Function** display appearing in the bottom left-hand corner of the screen, as well as by the **2nd function** button lighting with a ring of green.



The **Option/All** button has 2 main functions:

- 1) When pressed and released, any channel that is a member of a gang will be temporarily isolated from that gang.
- 2) When pressed and held, any parameter that is adjusted on a single channel will also be adjusted in the same way on all of the channels in that bank

1.3.8 Channel Types

The signal flow of the SD8 is best understood in terms of the four channel types contained within it, shown below. Each channel type offers full signal processing capabilities. As a summary, the four channel types are as follows:

- Input channels bring signals into the console to be mixed and sent to aux and group busses.
- Aux channels send a variety of mixes of the Input channels to the Aux outputs, mainly for use as monitor mixes and FX sends.
- Group channels mix groups of input channels together, to feed the buss outputs or the output matrix.
- Matrix channels send the outputs of the matrix to the console's main outputs (Optionally).

The Group channels, Aux channels and Matrix channels are all referred to as output channels. While the Aux and Matrix channels are the channel types most commonly routed to outputs, all four channel types can be routed directly to outputs.

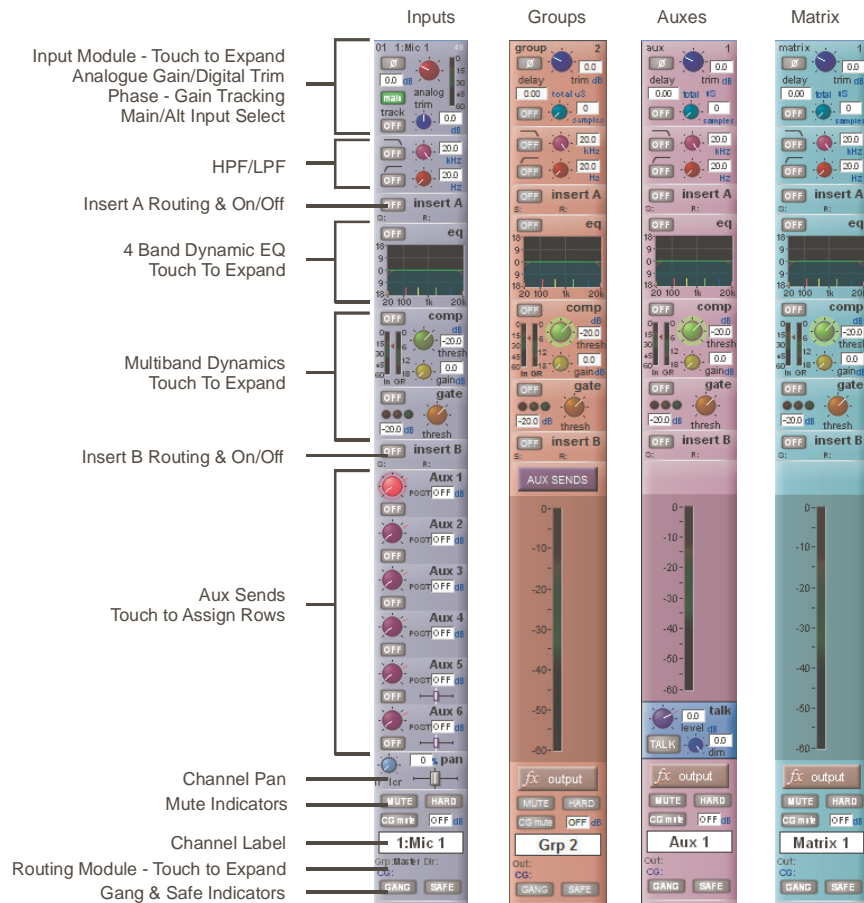
Channels are laid out in banks of 12 on the console worksurface and can be identified by their colour: Light-blue for Input channels, red for Group channels, purple for Aux channels and blue-green for Matrix channels.

By default, the Input Channels will be assigned to Layer 1 on the left and right sections of the console. The output channels (Groups, Auxes and Matrices) will be assigned to the centre section.

Control Groups will also be assigned to the centre section. These bank assignments can be customised by the user and saved in a session at any time.

Holding any bank or layer button down for a couple of seconds will switch all 3 worksurface sections to the same bank level or layer.

The controls on each different type of output channel are identical but an input channel has a number of additional features.



1.4 Hardware Configuration

1.4.1 Connections

Detailed information on the various systems of connection is provided in the relevant Appendix but the following diagram provides an overview of a single console/single rack setup.

All connections should be made before switching on the console and racks.

The console and rack each have dual redundant power supplies and both should be switched on at all times. After switching on the console the software will be launched automatically and the state of the worksurface and settings should be the same as when it was last Shut Down.

To Shut Down the console press the **System>Shut Down** button and wait until you receive a message saying that it is safe to switch the power off.

The SD8 worksurface has 8 analogue I/O and 8 AES I/O on its rear panel and additional I/O is supplied in the form of a remote MaDiRack which has 48 analogue inputs and 8 analogue outputs as standard. This rack is connected to the worksurface by 2 x 100M high specification 75 Ohm coaxial cables fitted with BNC connectors. This MaDiRack has two pairs of MADi connectors - Main MADi IN & OUT and AUX MADi IN & OUT.

In normal operation the MADi connections should be as follows (see diagram below):

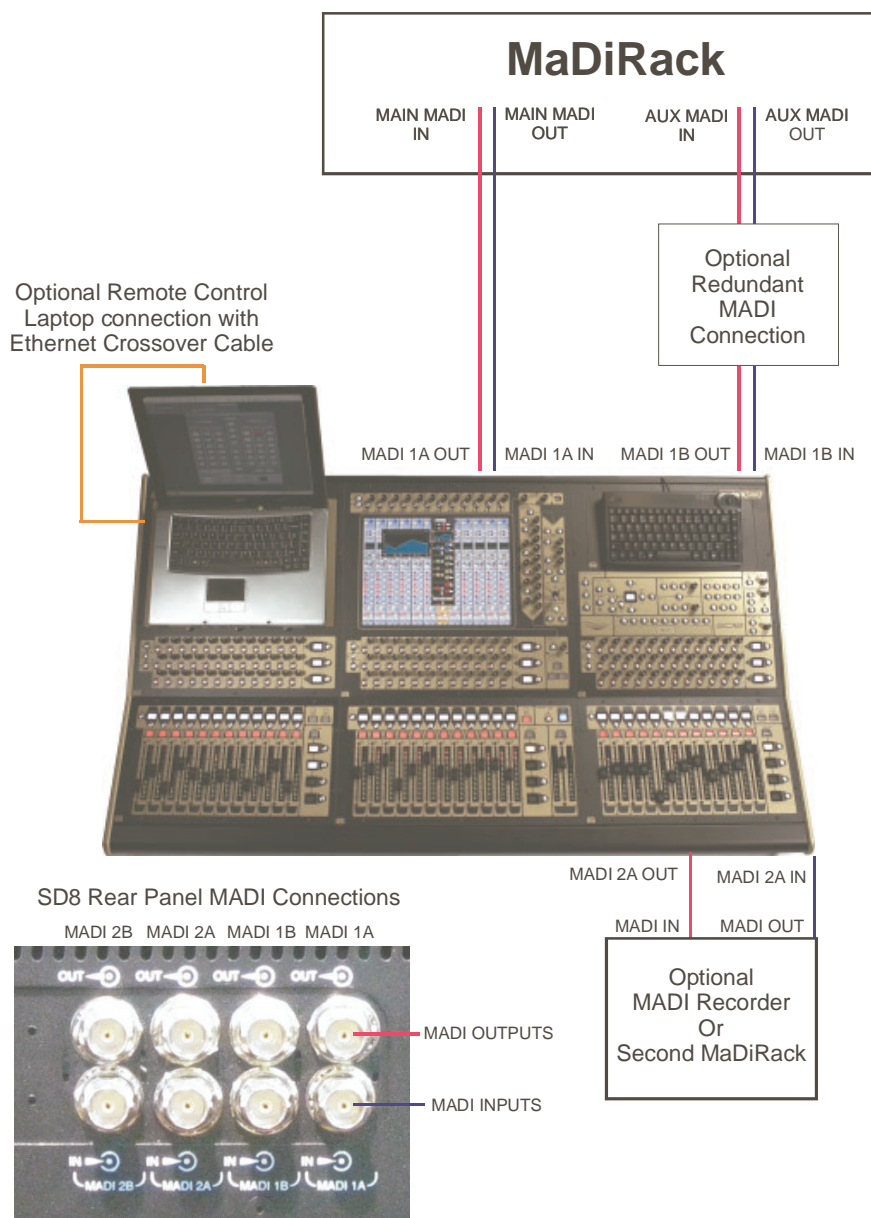
Rack MAIN MADi IN connected to the console MADi 1A OUT

Rack MAIN MADi OUT connected to the console MADi 1A IN

Note - Optionally, a second set of MADi cables can be connected to provide MADi redundancy from the rack's AUX MADi ports to the console's MADi 1B ports

The console's MADi Port 2 can be connected to a MADi recorder or a second DiGiCo Rack or console.

STANDARD CONNECTION WITH MADI



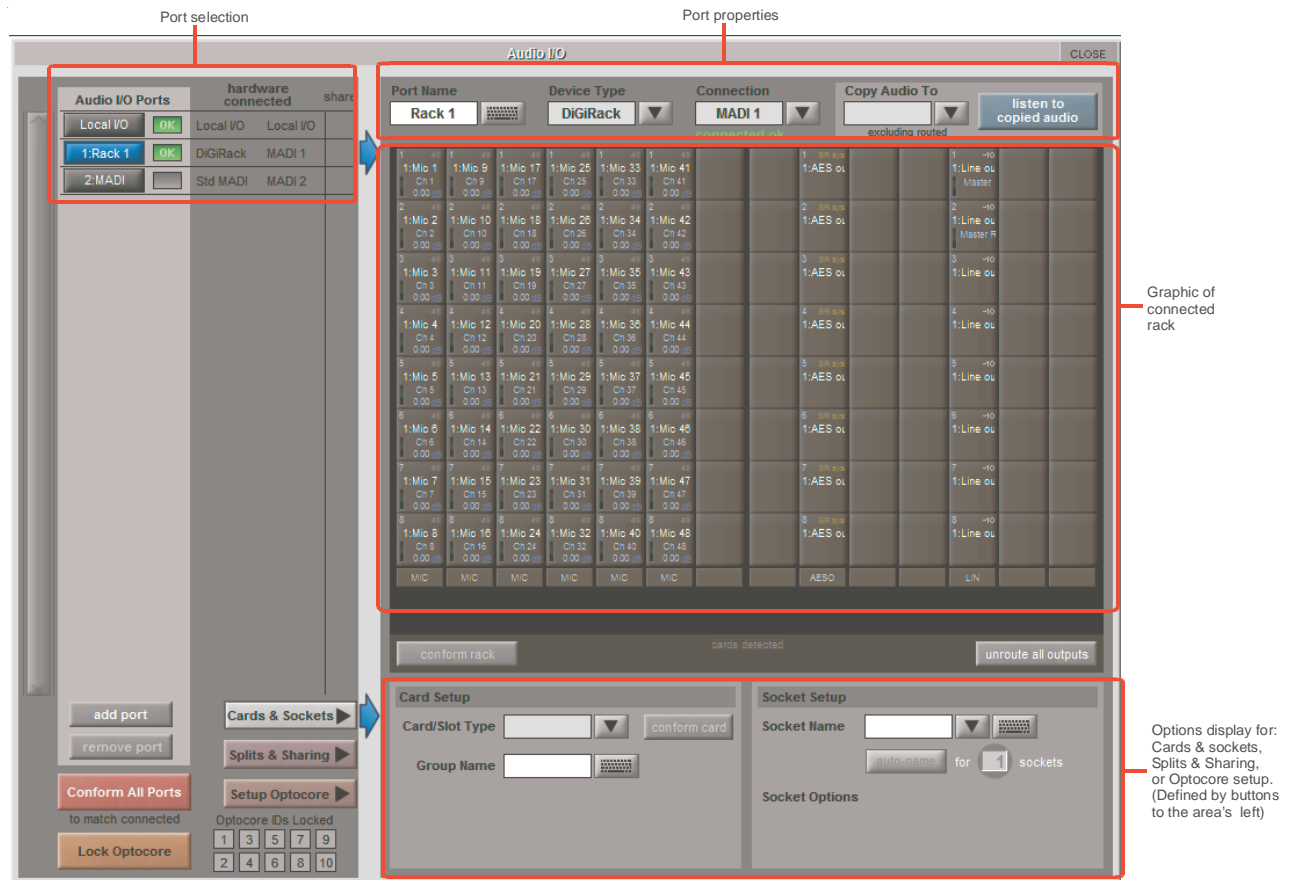
1.4.2 Audio I/O Panel

The Audio I/O window is used to configure the physical I/O connected to the SD8, including configuring and naming the sockets of the cards installed in racks, and the setting of Pads and phantom power.

Local I/O : The SD8 provides local audio I/O in the rear of the console. These operate independently of connected racks..

To access the SD8 Audio I/O Setup touch **Setup>Audio I/O** on the Master Screen

The Audio I/O window that opens is divided up into the following sections:



The top-left corner of the window shows the ports. Each port relates to an available physical audio connection (Local IO, MADI Ports or optional Optocore connections).

The top section to the right of this contains the controls relating to the ports. When a port is selected, this section changes to reflect the status of the selected port, and allows it's configuration to be changed as required.

Below the port controls is a graphical representation of the rack configuration connected to the selected port. Depending on the port selected, the graphic will change, showing the available physical I/O. Each small "square" on the image represents a single physical audio connection or socket, with these arranged in columns or rows, representing I/O cards in racks, or the local I/O on the back of the console.

The section below the graphical rack picture displays one of three things, as selected by the coloured buttons to its left:

- Select Cards &Sockets to configure the cards or slots and sockets, including custom naming, phantom power and pad selection.
- Select Splits &Sharing to configure the sharing of card control between consoles and split outputs on an SD Rack
- Select Setup Optocore to configure optocore connections (See SD Software Reference Manual Appendix - DiGiCo Optocore V221 - For SD Rack Optocore Operation)

The local I/O configuration is fixed, so no hardware changes are possible. You can, however, change the Port Name, the Group Names and the Socket Names (the name of each physical connector on a card).

Note that **Setup Optocore** only applies (and only appears) if the session is setup to use Optocore version 221.

SD8 - Getting Started

1.4.3 Opto V220 (DiGiRacks) and Opto V221 (SD Racks)

SD Series consoles can operate with either one of two different Optocore firmware versions - V220 and V221.

V220 is compatible with DiGiRacks and MiNiRacks and cannot be used with SD Racks or DRacks.

V221 is compatible with SD Racks, SD MiNiRacks, NaNoRacks and DRacks, and cannot be used with DiGiRacks and MiNiRacks.

Note: Any type of rack can be used with an SD Series console if it is connected with Coaxial BNC MADI irrespective of the Optocore version that the console is using.

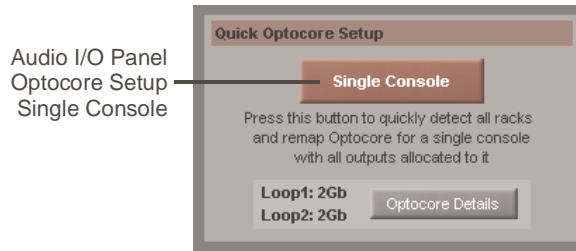
Sessions that have been created using Optocore connected DiGiRacks and MiNiRacks can be used with SD Racks and DRacks but a procedure must be followed to achieve this.

Sessions created using Optocore connected SD Racks and DRacks can also be used with DiGiRacks and MiNiRacks but this also involves a "conversion" procedure.

Note: For detailed information on Optocore system setup please refer to the SD Software Reference manual Appendix - DiGiCo Optocore V221 - For SD Rack Optocore Operation

1.4.4 Single SD Console System

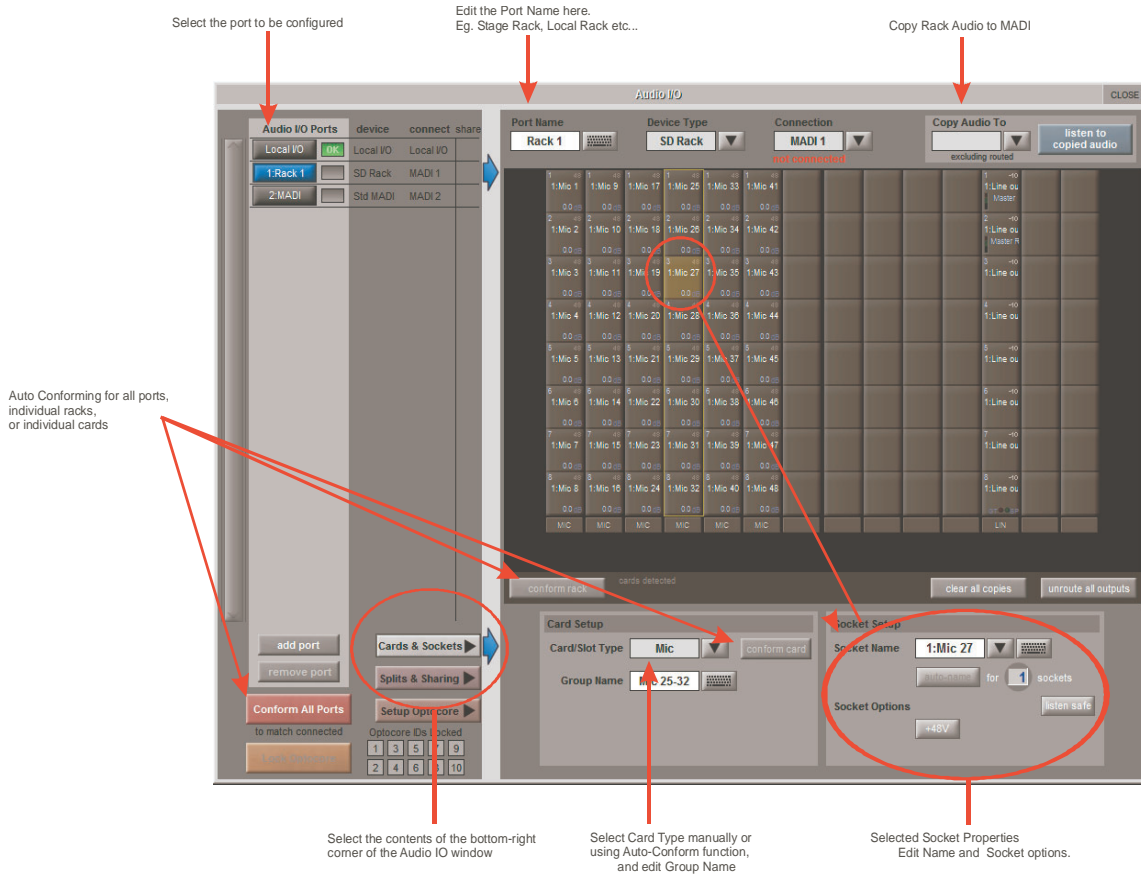
On an SD8, go to Setup/Audio I/O. Press the Setup Optocore button and the Single Console button will be shown with a bright red background. Press this button, press Yes at the confirmation stage and the console will create ports for all connected racks, allocate all output cards to your console and create the Optocore map. The system is now ready to use.



Audio I/O Panel
Optocore Setup
Single Console

1.4.5 Rack Connections

With a Rack selected in the left hand port selection list, the window will change to look something like the image below, depending on the cards installed in the connected rack. The graphic shows the 14 available cards/slots, 7 input & 7 output.



In order to use the rack, the on-screen contents of the rack must match the cards physically installed in the rack connected. There are two ways of achieving this :

Manual Conforming of Rack:

Select each card (column) and manually select the appropriate card in the Card/Slot Type drop down menu in the lower section of the window (displayed when the **Cards & Sockets** button towards the bottom-left is selected). Once the correct card type is selected, the Label at the bottom the selected card will turn green, indicating the card type matches the card installed in the rack. If the Card Type name is Red, then there is a mismatch, and the error should be corrected by selecting the correct card type.

Automatic Conforming:

There are three levels of automatic conforming:

- globally, using the red Conform All Ports button in the bottom left of the window;
- on a rack-by-rack basis, using the **conform rack** button just below the rack view section of the window;
- on a card-by-card basis, by selecting a socket from the card in the graphical display and using the **conform card** button next to the Card/Slot type button selector in the lower section of the window. (Note that the **Cards & Sockets** button towards the bottom-left should be selected)

Pressing any of these buttons will correctly select the card types for the range in question. Once complete, all of the Card Labels beneath each slot should turn green.

Copying Audio and Listening to Copied Audio (MADI Recorder Setup)

Audio from a Rack can be copied to the MADI Port Output by selecting the incoming Port in the Ports list and using the **Copy Audio To** drop down menu. For example, if you want to copy the Rack Audio Inputs to a recorder connected over MADI, select **Rack 1** in the ports list and then select **MADI** from the **Copy Audio To** drop down menu. The 56 inputs on Rack 1 will be copied to the SD8 MADI output.

In addition, by connecting the recorder's MADI Output to the SD8 MADI Input, the playback can be monitored in the same channels as the original source material. Just press the **Listen To Copied Audio** button to monitor playback and press it again to return to monitoring the live sources from the rack.

Standard MADI Connections

If you have a standard MADI connection (not a DiGiCo Rack) to your SD8, you can set the console to display the MADI with generic signal names, i.e. MADI 1, MADI 2.. etc. through to MADI 56 (or 64) instead of the usual rack style names. The naming does not affect the signal, but makes routing signals easier.

Unrouting All Outputs

All outputs to the selected port can be unrouted at once by pressing the **unroute all outputs** button below the cards graphic and selecting **yes** in the warning pop-up which appears. "Copied" audio is not unrouted by this action.

Note that this will cancel all routing created in the channel screens and cannot be undone.

Console to Console routing

If two DiGiCo consoles are connected together, it is possible to route audio between them.

1.4.6 Rack Sharing

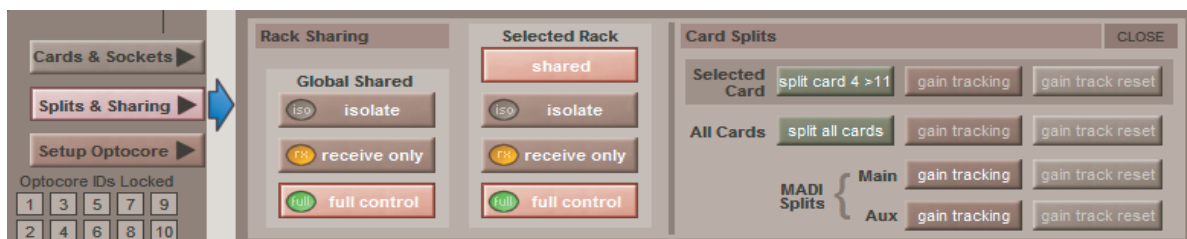
In a multi-console system where Racks are connected with MADI and shared between two DiGiCo Consoles, only one of the consoles can take control of the rack, with respect to Gain, Phantom Power and Pads. To overcome this, it is possible to place the SD8 into one of 3 states of operation:

Isolate : The SD8 will not communicate with the rack and therefore any adjustment of input gain or +48V switch will have no effect on the rack settings

Receive Only : The SD8 will receive the rack's existing settings but will not be able to control the gain etc on the racks.

Full Control : The SD8 will send its settings to the racks and change them accordingly.

Sharing is configured in the **Rack Sharing** area, found in bottom right-hand corner of the window when the **Splits & Sharing** button is selected:



These three states can be set on a per-rack basis (right column), or globally for all shared racks (left column).

1.5 Configuring a Session

The SD8 has a default setup which means that the new user need not get involved in configuring the desk at this stage. However, here is a brief overview of how the different displays are used in putting together a session. Each of the master displays introduced below are described fully within the SD Series Software Reference Manual

The **Setup > Audio IO** display is used to configure the physical I/O connected to the SD8, including configuring and naming the sockets of the option cards installed in racks, and the setting of pads and phantom power. (See previous section)

The **File > Session Structure** display is used for configuring how the console's the DSP channels is to be divided between channel types, and where the format of the channels is defined.

The **Session Structure** display can be used to automatically assign the channels to the worksurface. However, channels can also be manually added to the worksurface using the **Layout > Channel Faders** display.

1.5.1 Session Structure

When starting a new session, it is important to decide how many of each type of buss is required. While changes to session structure can be made once a session has been started, it is best to try and set these parameters before configuring the session. The structure will set the number and type of aux and group channels and allow you to choose which parts of the new session will be cleared and reset. There is also an option to automatically route the inputs and outputs from channel types that you have opted to clear.

To adjust any of the channel allocations, touch on the associated channel count box, and either enter a number using the pop-up number keypad, or adjust using the assigned touchturn controller.

The maximum total amount of Aux and Group channels available is 24 mono or stereo. As you increase the number that you require you will see the resources available decreasing accordingly in the display at the bottom of the panel.

Note - Pressing the Default All button followed by the Restucture button will automatically configure a new session with the following setup where the first 48 rack inputs are routed to input channels 1-48 and the Master Buss is routed to Local outputs 1 & 2 and also to rack outputs 1 & 2. All input channels will be routed to the Master Buss and the console headphones will be fed by the Master Buss when nothing else is soloed.

The default configuration is :

- 60 Mono or Stereo input channels (Fixed)
- 6 Mono Aux busses & 6 Stereo Aux busses (Adjustable)
- 6 Mono Group busses & 6 Stereo Group busses (Adjustable)
- 16 Matrix Inputs and 12 Matrix Outputs (Fixed)
- 12 Control Groups (Fixed)
- 1 Stereo Master Buss (Fixed)
- 2 Mono or Stereo Solo Busses (Fixed)

The main screenshot shows the 'Session Structure' interface with the following annotations:

- Touch number's to edit with pop-up keypad or touchturn**: Points to the 'initial state' and 'channel count' fields.
- Select session sample rate**: Points to the 'SAMPLE RATE' button.
- Enter Session title**: Points to the 'session title' input field.
- Set number and type of Aux**: Points to the 'aux busses' section with 'Mono' and 'Stereo' counts.
- Set number and type of Group**: Points to the 'group busses' section with 'Mono' and 'Stereo' counts.
- Option to Clear parts of the session when restructuring**: Points to the 'clear all' button.
- Option to route automatically inputs/outputs when using the Clear function**: Points to the 'auto-route' checkbox.
- Total number of unallocated processing**: Points to the 'unallocated processing' counter.
- Total number of spare busses**: Points to the 'busses' counter.
- Create a default session with flat parameters and basic routing**: Points to the 'DEFAULT ALL' button.

Two sub-displays are shown to the right:

- Set Order of Aux and Group busses**: A table for 'Order of Aux Busses' with columns for 'id', 'name', and 'width'. It lists Aux 1-12 with mono or stereo widths and includes 'add mono', 'add stereo', 'move up', 'move dn', and 'delete' buttons.
- Order of Group Busses**: A table for 'Order of Group Busses' with columns for 'id', 'name', and 'width'. It lists Grp 1-12 with mono or stereo widths and includes 'add mono', 'add stereo', 'add LCR', 'add LCRS', 'add F 1', 'move up', 'move dn', and 'delete' buttons.

Clear All Buttons : When changing routing, you have the option of clearing any non-default routing or processing (EQ, dynamics etc) from the channels in the session. This is especially useful when restructuring an existing session to make a new session. The clear snapshots, clear automation and clear macro's perform similar operations.

Rebuild Banks : When changing the session structure, there are two possible scenarios. If you restructure the session without rebuilding banks, any additional channels you have allocated are not "placed" on the worksurface, and need to be manually assigned to faders. If however, you restructure a session with Rebuild Banks enabled, the worksurface will be built with all channels available on the worksurface.

Aux Sends and Direct Sends : By toggling the state of the Aux Sends and Direct Sends Buttons in the Input Channels section, it is possible to change the default operation of the Aux Sends and Direct Sends. These functions toggle between "Post Fader", "Pre-Fader" and "Pre-Mute". These buttons can only be used in conjunction with the **clear all** function.

Auto-Route : The Auto-route functions automatically routes consecutive inputs for input channels, and consecutive outputs for busses. For example, auto-routing 60 inputs will route the first physical input (eg 1: Mic 1) to input channel 1, the second physical input (1: Mic 2) to input channel 2... until you either run out of inputs or channels. Auto-routes are as follows :

Input Channels auto-route with physical inputs

Aux, Group and Matrix Channels auto route to physical outputs

Matrix Inputs auto-route with group outputs

NOTE : Auto-Routing can only be used in conjunction with the "Clear All" button.

1.5.2 Assigning Faders to the Worksurface

If, after a Session Restructure, you find that newly created channels do not appear on the worksurface, open the **Layout/Channel List** panel on the Master screen and you will see a full list of all input and output channels that are present in the session.

To assign channels to the worksurface, select a bank and press the **LCD Function** button.

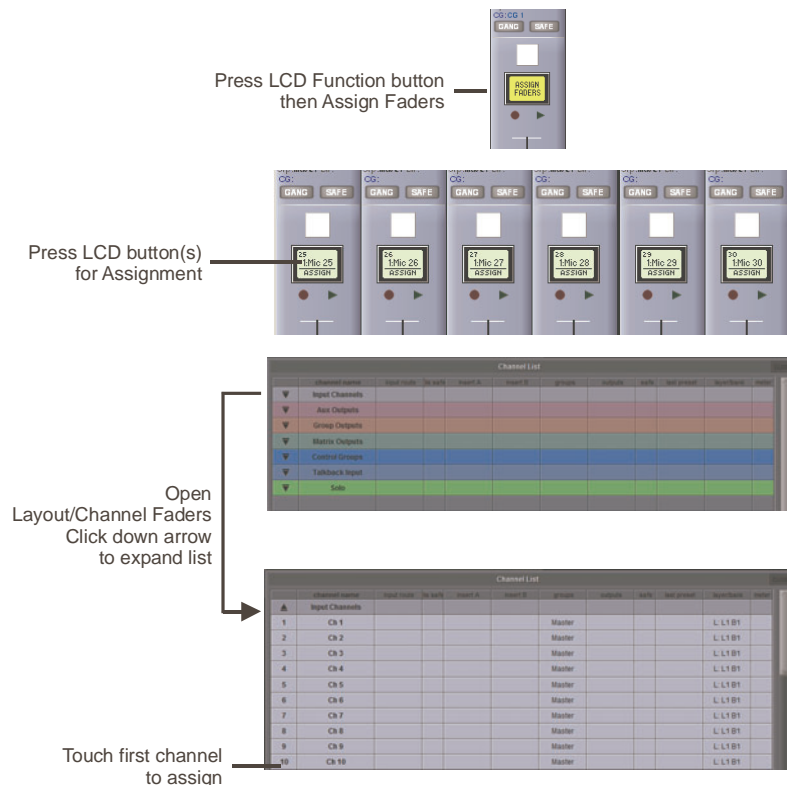
Then press the Channel Select button labelled **Assign Faders** to enter that mode and press each of the Channel Select buttons for the channels that you wish to assign.

Now press the first channel that you wish to assign on the **Layout/Channel Faders** list on the Master screen.

Consecutive channels will be assigned to the worksurface for each Channel Select button that is in Assign mode.

Now press the LCD Function button again and return to the standard mode by pressing the LCD button labelled **Solo**

*Note that column widths can be adjusted by dragging their borders within the title row. To return all columns to their default widths, press **RESET WIDTHS**, in the top left-hand corner of the window.*



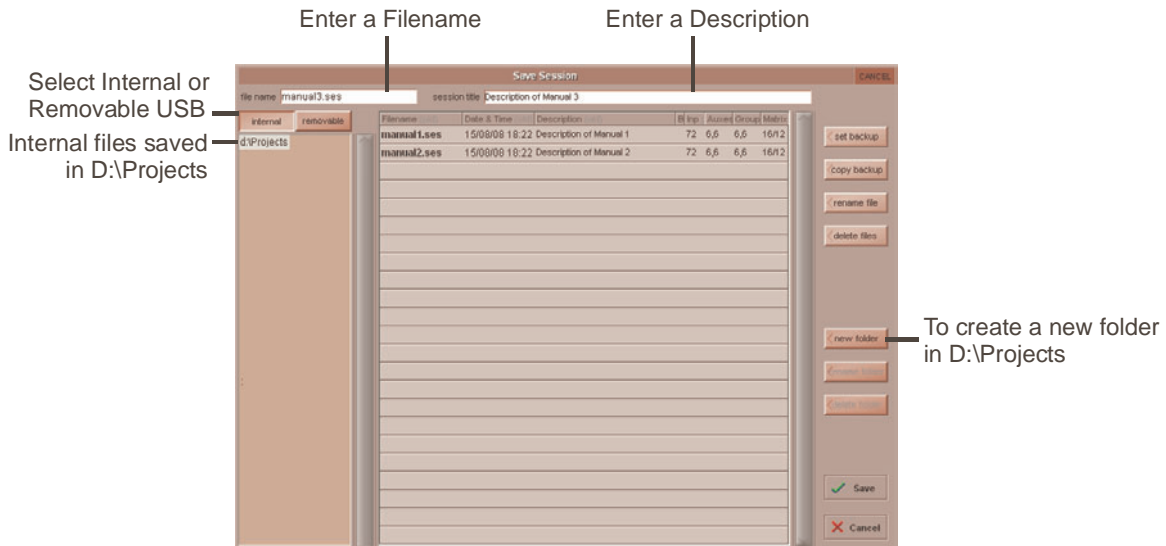
1.6 Saving and Loading Sessions

1.6.1 Save As New File

When you change the configuration of the a session you should save it to the console's flash drive under a new filename. If the Save Session panel has not appeared automatically after a session restructure then touch the **Files** button on the Master screen and then press **Save As New File**.

Select the destination drive (Internal or Removable) and file path and then enter a new file name and description for the file - then press the **Save** button.

Note: If you touch a session name on the existing list, this name will automatically be selected as the new file name and touching Save will overwrite the old file.



1.6.2 Save Session

This button which is found above the **Save As New File** button will save the existing session in the same location and under the same file name as it was previously saved or loaded from. It therefore serves as a **"Quick Save"** option to update an existing session.

Remember that this function will overwrite your last saved version.

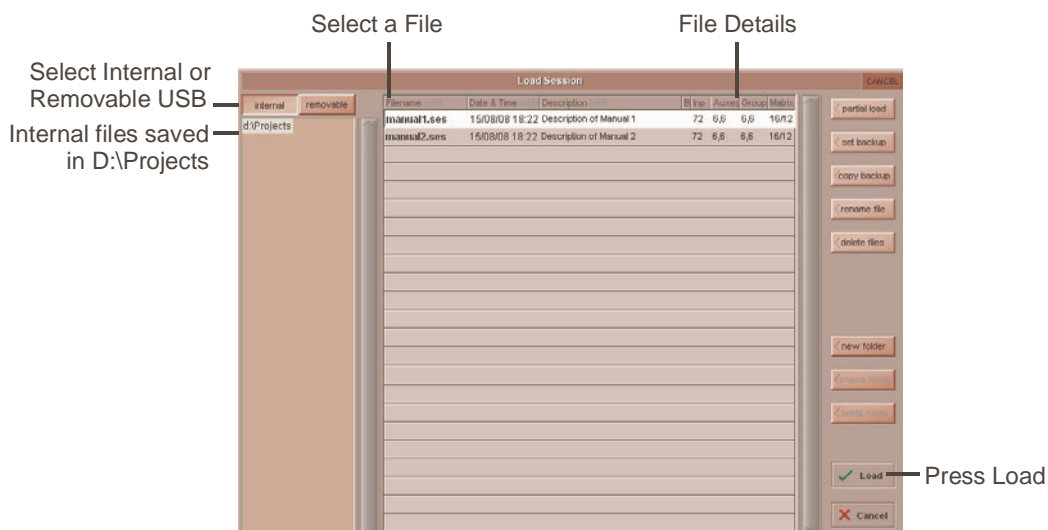
If you wish to save the session under a new name use the **Files** menu button and select **Save As New File** (See above).

Load Session

To load a previously saved session:

Touch the **Files** button on the Master screen and then press **Load Session**.

Select the source drive (Internal or Removable) and the required file from the list - then press the **Load** button.

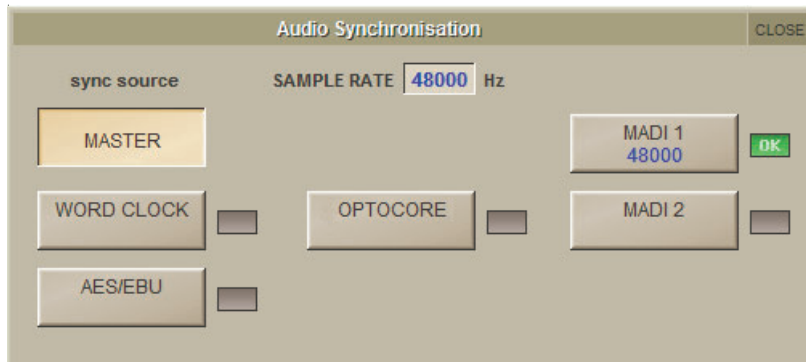


1.7 Audio Sync

The SD8 will operate at Sample Rates of either 48000Hz (48kHz) or 96000Hz (96kHz).. By default, it is set to clock internally (as a Master) at 48kHz.

Within a normal setup, the SD8 will usually remain as clock master. However, there are times when the SD8 needs to be clocked externally. The Audio Sync panel allows you to control external synchronisation.

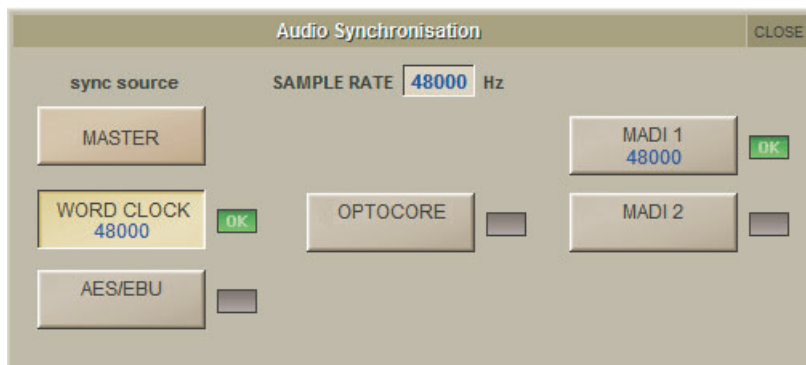
To access the Audio Sync Panel, touch the Setup Menu button, followed by Audio Sync. The following panel will open...



The SD8 will clock from the following sources : Word Clock, AES/EBU, MADI & Optocore (if fitted)

Note : When a valid clock is detected on an external sync input, the corresponding Green OK box will light, even if that input is not selected as the clock source for the SD8.

Example External Clocking : Word Clock @ 48kHz



1.8 Routing Basics

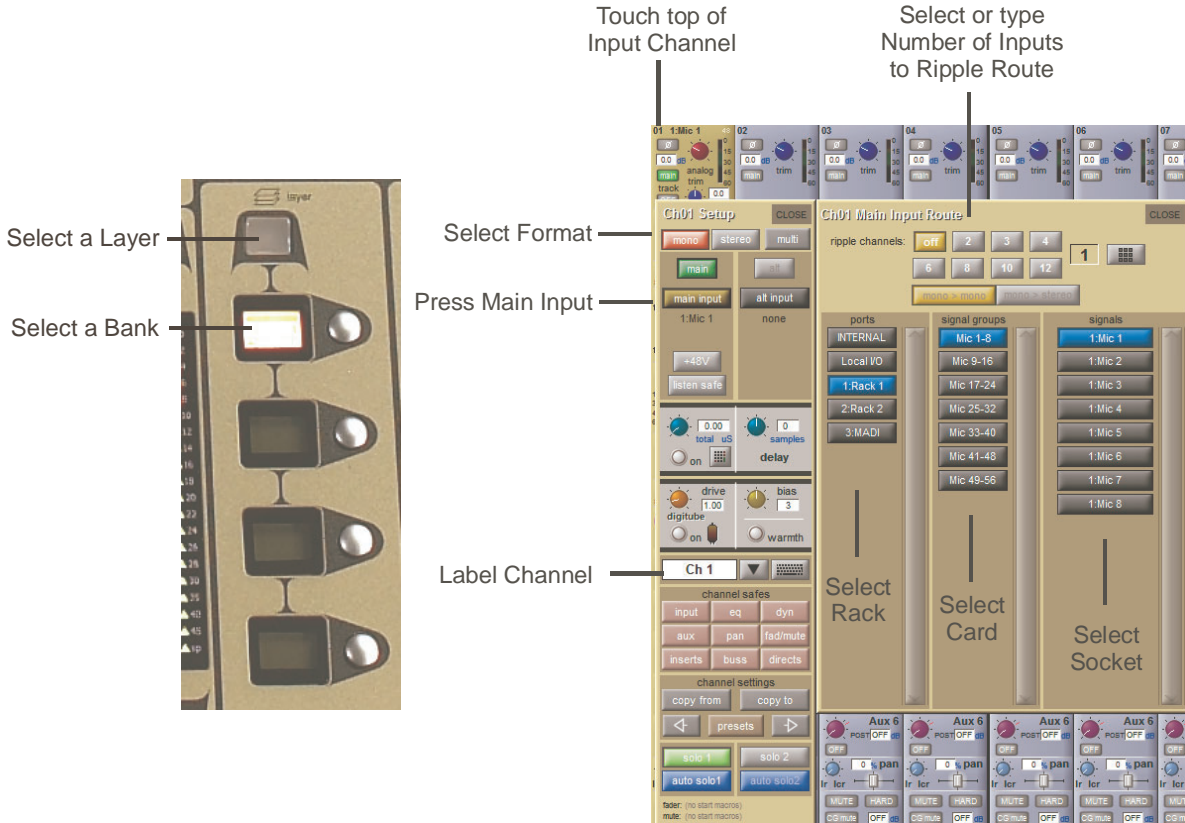
1.8.1 Selecting Inputs & Outputs

All channel input, output, insert send and insert return routing is done via routing displays, accessed via the dark grey routing buttons in the channel **Setup** and **Output** displays (shown below for an Input channel's input).

Note that multi-channel signals are routed individually, and then collected together as a "Multi Channel" as described in the SD Software Reference manual

To access Channel Input Setup, touch the top of an input channel display on the touchscreen.

To access Channel Output Setup, touch the bottom of any channel type's display on the touchscreen.



Within each display, there are three columns containing three levels of routing selection:

- The left-hand column contains the available **ports** within which the desired input or output might be located;
- The middle column, **signal groups**, then shows the available groups of inputs or outputs within that port;
- The right-hand column, **signals**, then displays the individual inputs or outputs available within that signal group.

The boxes in each column are lit blue to indicate that they are currently selected. If there is already a routing assigned within the display, the **port** and **signal group** columns containing the current assignment will be half-lit.

Each output can only have one channel routed to it. The outputs that are currently in use by another channel display in blue text. If you attempt to route a different channel to an output which is already in use, a confirmation box appears, indicating which channel is already using it, and warning that continuing with the action will cause the old channel to be derouted from this output. Press **Yes** to proceed, **No** to cancel.

Note that when routing direct outs from Input channels or outputs from output channels, any number of available signals can be selected. A new route selection will therefore be added to previous selections in these cases. However, inputs, insert sends and insert returns can only route to/from one signal (in the case of mono channels) or two signals (in the case of stereo channels). A new route selection will therefore result in the previous selection being lost for inputs and insert sends and returns.

For stereo channels, left and right routes are presumed to be consecutive: When routing stereo signals, select the left route, and the next signal in the list will be automatically selected as the right route. If the last signal in a signal group or port is selected as the left route, the first signal in the following signal group or port will be selected as the right route.

For input and insert return routing, the **INTERNAL** port provides the following signal groups:

Misc:	The oscillator, white and pink noise generators.
Graphic EQs:	The outputs of the SD8's internal graphic EQ's.
Effects:	The outputs of any effects sends that have been created
Channels:	The direct outputs from the other input channels
Groups:	The outputs of the group busses
Auxes:	The outputs of the auxiliary busses.

Note: The outputs for the channel being routed are locked out of the signal list.

Note also that the console views all routes as a single list. Therefore, if the left signal is connected to the last signal in a port, the right signal, will be automatically connected to the first signal of the next port, regardless of port type.

For output and insert send routing, the **INTERNAL** port provides access to the inputs of the SD8's Graphic EQ's, and the inputs to any effects that have been created.

The **0:Local I/O** port contains a list of the inputs or outputs found directly on the SD8's back panel.

The **Rack** ports contain all of the inputs or outputs available within the remote I/O racks, as defined in the **Audio I/O** display

Once a route has been selected, its name will appear below the routing button in the **Setup** or **Outputs** display.

Whenever a route is created, metering and additional controls are made available below the routing button. These controls are dependent on the type of route created.

Line input routed to an input or insert return:	an analogue gain control.
Mic pre-amp routed to a mono input:	an analogue gain control and a 48V button for remote control of rack functions.
Mic pre-amp routed to a stereo input:	an analogue gain control and a 48V button for remote control of rack functions.
Mic pre-amp routed to an insert return:	an analogue gain control, a 48V button and a phase reverse button.
Output routed to a console output:	a -10db pad (rack out only), on button for switching the send on and off, gain trim and send point selector which toggles the place within the channel from which the direct output is fed: pre-F Pre-fader, post Post-fader pre-M Pre-mute (and pre-fader)
Insert send routed to a console output:	a -10db pad (rack out only), on button for switching the send on and off, and trim.
Insert send routed to a graphic EQ:	an on button for switching the send on and off
Output routed to a graphic EQ:	no additional control.

Buttons become ringed in either red or green to indicate that they are on.

1.8.2 Ripple Channels

The **ripple channels** function, located at the top of the route display, allows consecutive channel routes to follow the routing of the current display incrementally. For example, Channels 1 to 8 direct outputs can be routed to Rack 1 > Line outs 1 to 8 respectively by routing Channel 1's direct out to Rack 1 > Line out 1 and allowing the **ripple channels** function to route Channels 2-8 automatically.

The number of channels to be rippled is defined either by selecting the appropriate grey numbered button, or by selecting the keyboard button to the right of the numbered buttons, typing the required number of channels (8 in the example above) into the numeric keypad which appears, and pressing **OK**. Once you have configured the **ripple channels** function, any routing action will also effect the appropriate number of channels above the channel being routed.

The **ripple channels** function treats stereo channels as two channels. In other words, if Channel 2 in the above example is stereo, the **ripple channels** function will route Channel 1 to Line out 1, Channel 2 Left and Right to Line outs 2 and 3, Channel 3 to Line out 4 etc.

1.8.3 Channel Names

The black and white text box in the **Setup** display is used for naming the channel. Channel names are displayed in the scribble strip at the bottom of the screen. By default, the channel is given the same name as the selected input signal.

Note that if no input signal is selected, the scribble strip simply displays the channel number, prefixed by **ch** for Input channels, and prefixed by **Aux**, **Grp** or **Matrix** in the case of output channels.

The following notes are specific to naming channels:

The **Next** button moves the entire **Setup** display to the next channel.

At the very top of the channel, the channel number and input signal name are displayed for Input channels, and the channel type and number are displayed for output channels. These labels remain unchanged, regardless of any channel naming.

For Input channels, note that if the channel input signal is changed once a channel has been manually named, the channel name will no longer follow the input signal name. To reactivate the automatic channel naming function, clear the name and re-select the channel input.

Note also that the channel Output display also provides access to this channel naming facility.

SD8 - Getting Started

Channels can also be named directly in the **Channel List** display (in the **Layout** menu). Open the display, activate the **Edit** function below the list, and expand the required channel type list by touching its row. Touching the **channel name** column for any channel in the list will cause a keyboard pop-up to appear, where a name can be typed in the usual way.

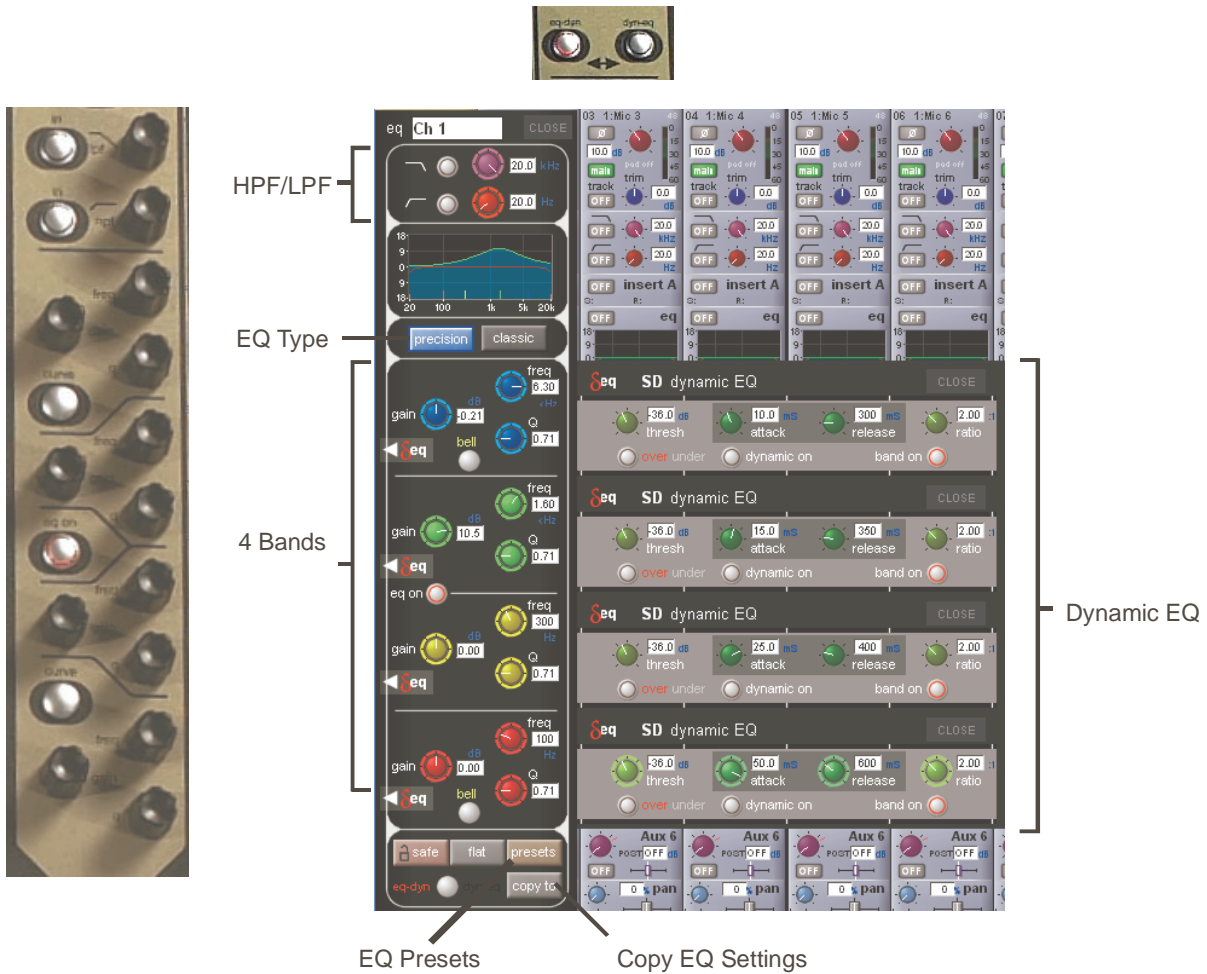
1.9 Channel Processing

1.9.1 EQ

The EQ section comprises four user-configurable parametric filters and a pair of swept High-pass and Low-pass filters. The EQ is accessed by touching the on screen display to **Assign** the channel (**the colour changes to yellow**) and then using the controls on the right hand side of the screen. When a control is adjusted the expanded view seen below appears in the input screen but this view can be seen at any time by touching the EQ response graph on the screen.

Note - If the expanded view does not appear when a control is adjusted open the Options panel and set the Auto Expand EQ option to Yes

Touching the normal EQ response graph will show an expanded view in a separate panel. The order of EQ and Dynamics in the channel signal path can be changed using the worksurface button to the right of the worksurface HPF and LPF controls.



The type of filter used by the top and bottom bands can be changed by successive presses of the **Curve** button for that band.

Dynamics are available to each EQ band – dynamic EQ modules can be assigned to a maximum of 10 channels. Clicking on the 'delta' EQ button below the band's gain control will open up its Dynamic EQ display:



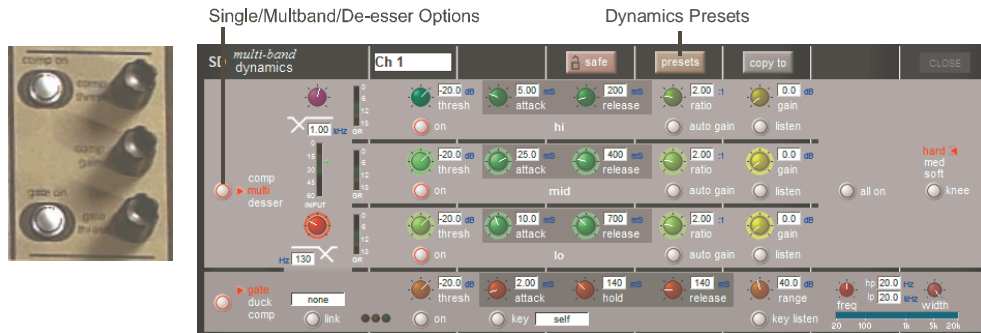
1.9.2 Dynamics

The dynamics are accessed by touching the words **Comp** or **Gate** just below the EQ graph on screen to open the dynamics panel.

There are two dynamics modules, the first of which can function as a simple compressor, a 3 way multiband compressor, or a de-esser, according to the **comp/multi/esser** button to its left. The second (lower) module can function as a gate, a ducker or a compressor with an external sidechain, according to the **gate/duck/comp** button to its left.

The worksurface controls beneath the screen control the various parameters. Touching the **Close** button in the top right corner of the panel will close it.

Dedicated **Threshold, Gain** controls and **In/Out** switches can be found on the right hand side of that section's worksurface. These can control the Assigned channel's dynamics whether the on screen dynamics panel is open or not.



The **Assignable encoders and switches** beneath the screen can be assigned to any of the main dynamics controls. Hold the **Assign Switch** button on the left of the input section and touch the dynamics control required on the screen. The selected control is shown by the **Status Display**.

Multiband Compression is available for up to 10 channel dynamics modules. Click on the **dynamics mode select** button on the left of the display to access the 3 dynamics bands

Each band includes all of the parameters as those found in the single band compressor. The link function remains available for the whole compressor, and is not assigned to any band. The bands can be switched on individually using the **on** buttons in the left-hand side of each band, or together using the **all on** button to the display's right.

The crossover frequency between bands is controlled using the purple and red pots to the left of the **hi** and **lo** bands. Each crossover has a range of 20Hz to 20kHz, and the crossover frequencies are displayed below each pot. Each band can be auditioned by pressing the **listen** button below each **gain** pot which solo's that band to the mix (not the solo buss), in effect temporarily switching off the other bands.

Pressing **multi-band** again returns the compressor to single-band.

The channel strip's compressor threshold and gain controls adjustment all three bands' controls, maintaining any relative offsets. The individual controls are mapped to the assignable rotaries below the screen.

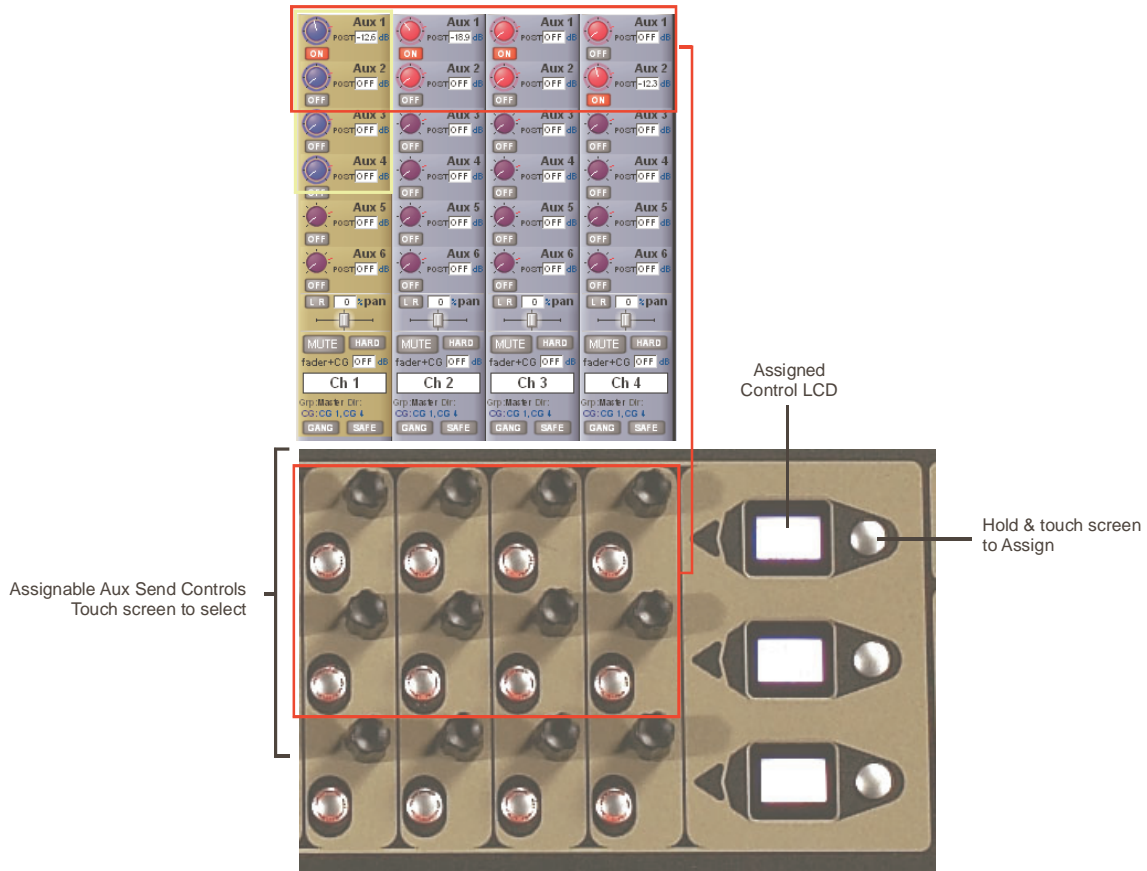
Note: Beyond the link function, the single and multi-band compressors have completely separate settings: No settings are copied between them, and the settings of each remain unchanged when the other is active.

SD8 - Getting Started

1.9.3 Auxiliaries

The auxiliaries can be accessed by touching the auxiliary row on screen or using the **Screen Scroll** buttons on the left of the worksurface

Using either of these methods, the highlighted auxiliaries on the input screen will change. The 3 rows of rotary controls and switches in each worksurface section are used as auxiliary sends, pans (with 2nd Function ON), On/Off and pre/post switches (with 2nd Function ON).



It is also possible to show all of the aux sends for a channel in a single display and assign them to the 24 rotaries beneath the screen. This is done by touching the currently assigned aux row on the screen for the channel that you want to display. The layout of the display indicates which encoder each aux is assigned to; if there are more that 24 sends, the assignments becomes scrollable using the **Screen Scroll** function.

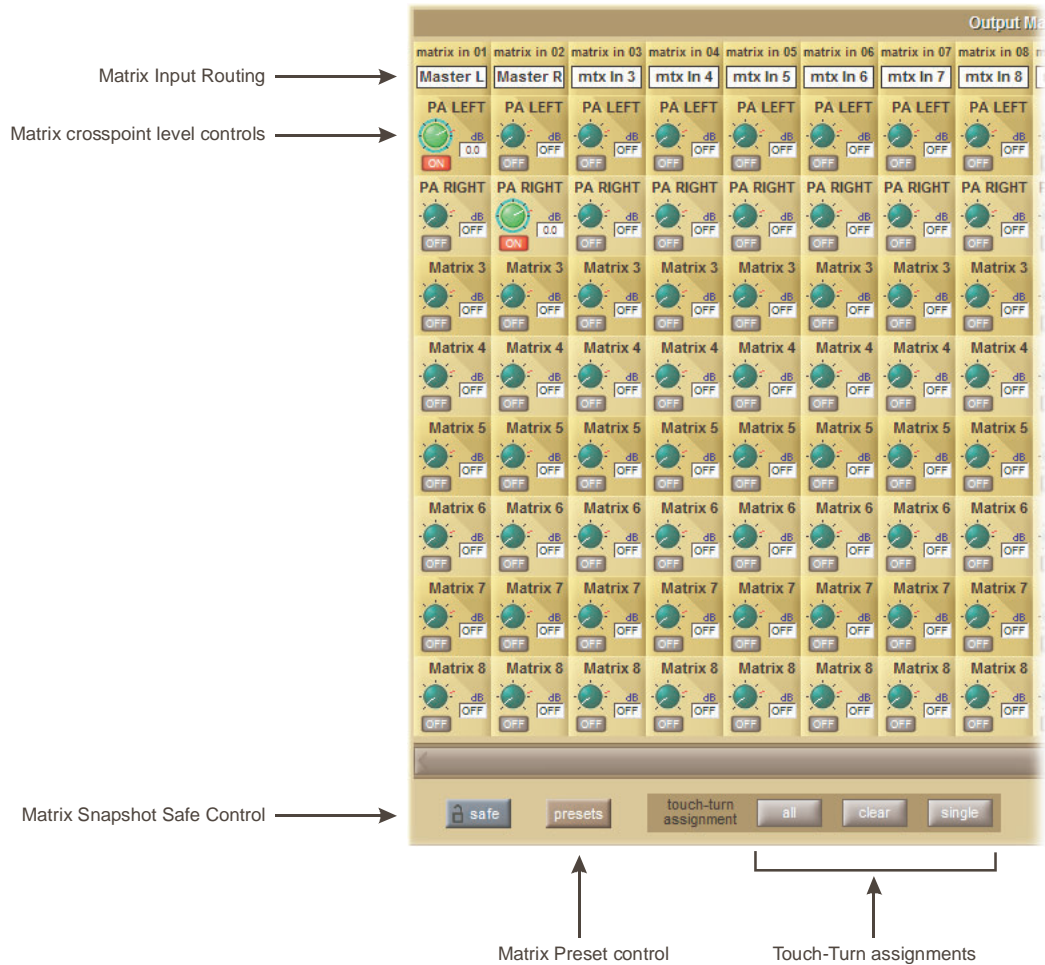


Once you have adjusted the auxes in this display, you need to close it manually before opening any other channel detail display.

1.10 The Matrix

To open the Matrix Inputs panel, touch the Matrix button on the Master Screen Menu. The window that opens allows you to route inputs to the Matrix Output Channels, and set the Matrix crosspoint levels.

To route an input, touch the top of the appropriate Matrix column. This opens a standard SD8 input routing page.



The example above has the Master Stereo Buss routed to the inputs of Matrix 1 and Matrix 2 (Labelled as PA LEFT & PA RIGHT). By adjusting the crosspoint levels, you can change how much of each side of the Master buss is fed to these Matrix Channels.

There are three modes of level adjustment : **multi**, **single** & **all**.

Multi : Touch one or more level “knob” on screen, then adjust using the Touchturn control.

Single : Touch any level “knob” and adjust. Touching another “knob” will deselect the first.

All : All “knobs” are adjusted at the same time.

When adjusting more than one crosspoint, their relative levels are maintained.

1.11 Control Groups

Any number of input channels and output channels can be connected to one or more of the 12 Control Groups. They can then all be operated from a single worksurface channel. Changes to the Control Group fader, mute or solo or controls will affect all channels connected to the group.

There are 2 methods to set up Control Groups:

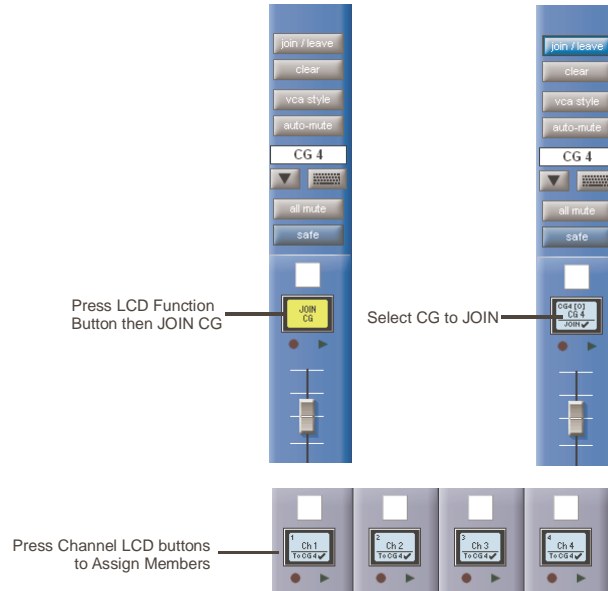
1) Press the LCD Function button on a CG fader bank (normally found in the centre section)

Press the JOIN CG button

Press the channel select button for the CG that you want to use

Press the channel select buttons for each of the channels that you want to make members of the CG

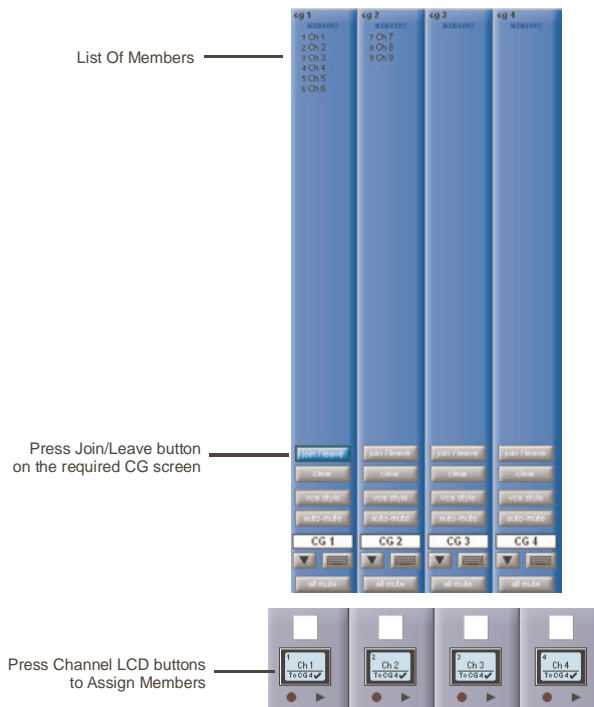
Release the JOIN CG button and return to standard Solo mode by pressing the channel select button beneath the LCD display labelled SOLO



2) Press the on screen JOIN/LEAVE button for the required CG channel

Press the channel select buttons for each of the channels that you want to make members of the CG

Release the JOIN/LEAVE button



A list of all the connected channels and their names is displayed above each Control Group display.

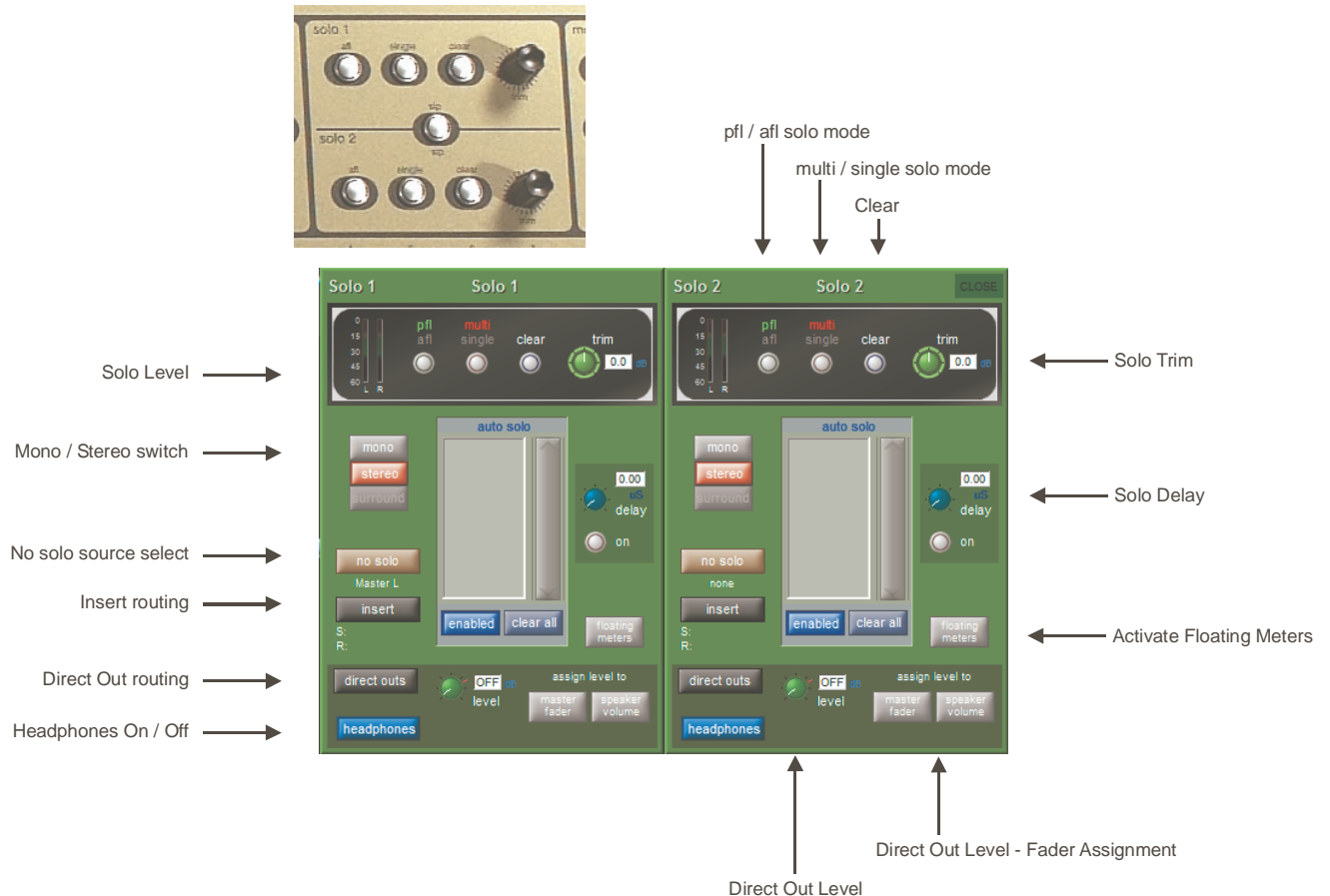
You can also clear all the channels from a Control Group by pressing **Clear**.

When a channel is a member of a Control Group, its own controls can still be adjusted independently of the other Group members. Adjustments to fader levels are transmitted to the Group members as dB changes, so that a level increase of 2dB on the Control Group fader will increase all the member levels by 2dB, irrespective of the relative levels of the individual channel faders.

1.12 Solo Setup

The SD8 Solo panel is accessed from a button at the top of the Master Screen. Some of the controls on this panel are duplicated on the right worksurface section..

There are two solo busses and each channel on the consoles can be independently assigned to use Solo1, Solo2 or Solo 1+2. Therefore, if the console was being used for Stage monitors, the first solo buss could feed "In-Ear" monitors, and the second solo buss could feed a wedge.



The following functions are available independently for each solo buss :

- Mono / Stereo Switch
- No Solo source routing
- Insert Point with both internal and external routing capability
- Direct Out routing (eg. for feeding a wedge)
- Assignment of Direct Out level control to master fader or speaker volume pot
- afl or pfl mode
- single or multi solo mode
- Delay
- Level Trim
- Auto solo mode
- Solo meters can be displayed on the Master or Overview screen by pressing the floating meters button below the solo delay area in either side of the Solo panel.

No Solo : Source for solo buss when no channel is in solo mode. No Solo source does not show on Solo meters.

Auto Solo : If a channel is set to Auto Solo, it will automatically solo when another channel is soloed. The Auto Solo function of each solo buss can be enabled and disabled as required. The solo buss must be in multi mode for the auto solo function to operate.