

## Version Check and Update Process: R-44

Please read these instructions fully and carry out the update process carefully, as described.

**NOTE:** Failure to carry out the update procedure properly can result in product failure.

### Things to Prepare

The following are necessary to carry out the update process:

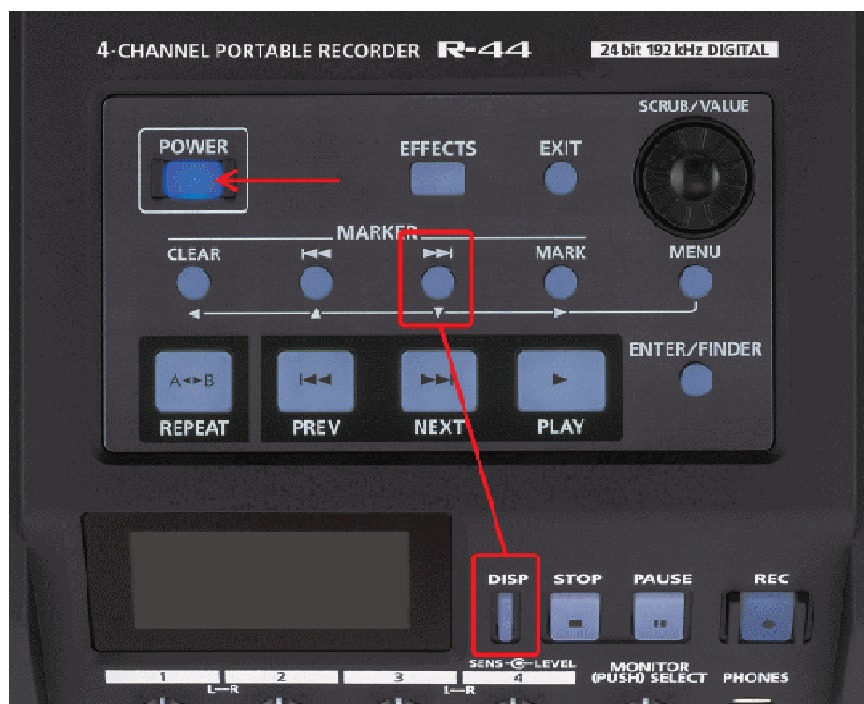
- R-44 unit
- SD or SD-HC card, formatted in the R-44
- A computer with a USB port or SD card reader
- R-44 System Update file (MAIN.BIN)

### Checking the version number

1. Plug AC adapter into R-44 DC In jack.

**NOTE:** Do not attempt Version Check or System Update on battery power!

2. Press and hold [DISPLAY] and [▼] buttons while powering up the unit.



3. Release [DISPLAY] and [▼] buttons when the Version menu appears:

EDIROL R-44			
-----			
MAIN	Ver	01.00	(0008)
BOOT	Ver	01.00	(0006)
LOAD	Ver	01.00	(0006)
UPDT	Ver	01.00	(0006)
-----			
ENTER=Start/POWER=Off			

*Your version numbers may be different than those shown here.*

4. Make note of the MAIN Ver number.
5. Power down the R-44 by pressing the [POWER] button.

If the MAIN Ver is older than the Firmware Update version, you need to update your R-44.  
If the MAIN Ver is the same as the Firmware Update version, you do not need to update.

## **Updating your unit**

### **Cautions**

- You should back up any files, projects or data on your SD card prior to performing a firmware update.
- If there is a power failure or communications failure during the update process, your product can be damaged and your files, projects or data can be lost. If the update process has failed and you cannot restore functionality to your product, please call our support staff during business hours: 800-380-2580.
- Roland Systems Group is not responsible for hardware failures or loss of data related to firmware updates or system upgrades performed in the field.

### **1. Prepare an SD or SD-HC card.**

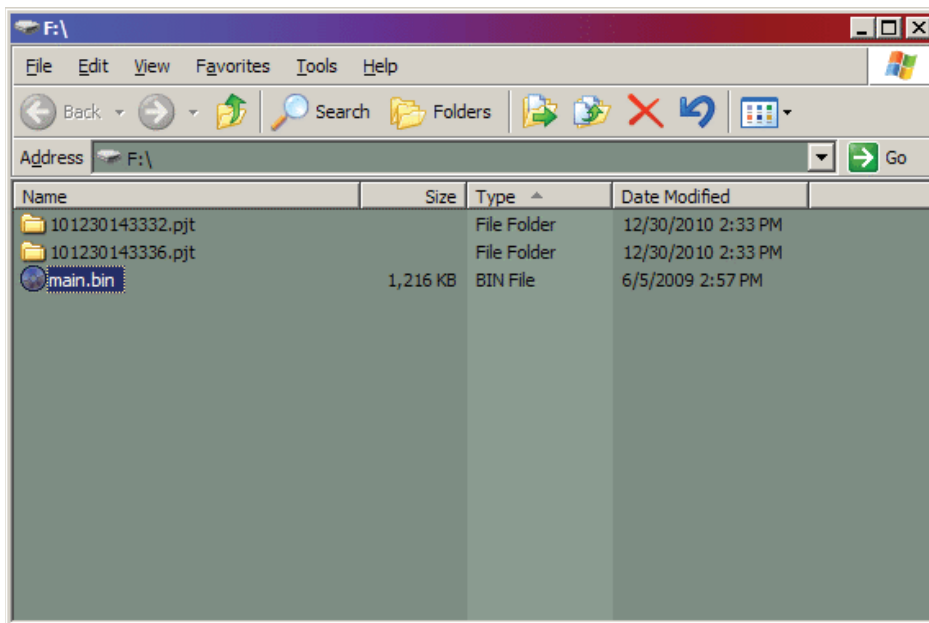
If you haven't already formatted an SD or SD-HC card for use in the R-44, you must do it now. Refer to the instructions in the Owner's Manual for formatting a memory card in the R-44

### **2. Copy Update File to USB stick**

Download the R-44 System Update file from our website to your computer:

<http://www.rolandsystemsgroup.com>.

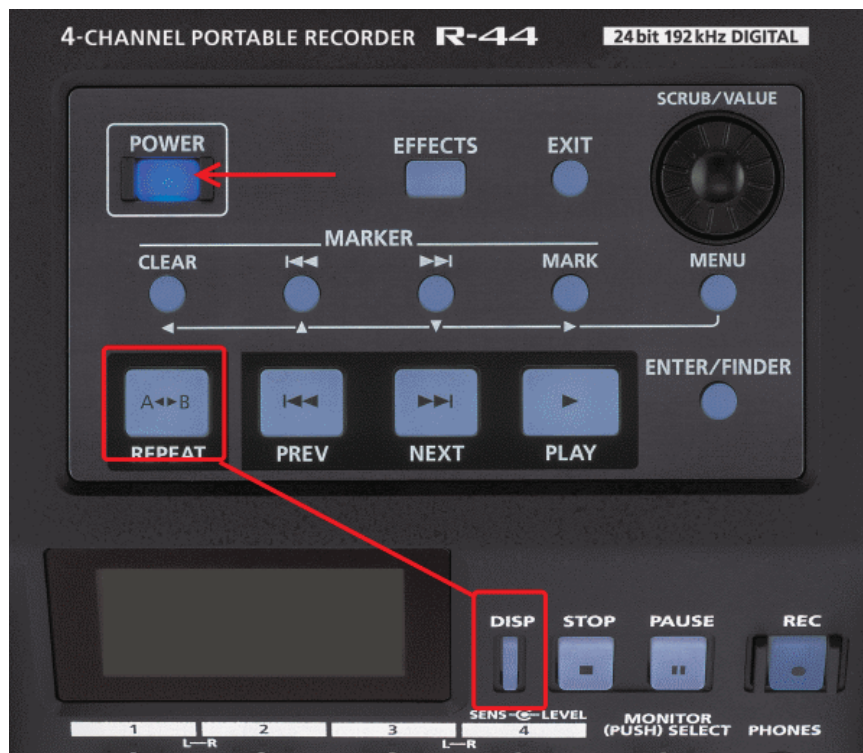
- Visit the R-44 product page, then follow the download link to the R-44 System Update file. Agree to the EULA and download the System Software file.
- Your downloaded file will be a ZIP file containing the MAIN.BIN update file and this installation guide PDF. Double-click the ZIP file to open the ZIP archive, then drag and drop the MAIN.BIN file to the Desktop.
- Make sure your SD or SD-HC is plugged into an SD card slot on your computer, or use a USB SD card reader to connect your SD/SD-HC card to a USB port on your computer.
- Drag and drop (or copy) the MAIN.BIN file from your Desktop to the root directory of your SD card (see below):



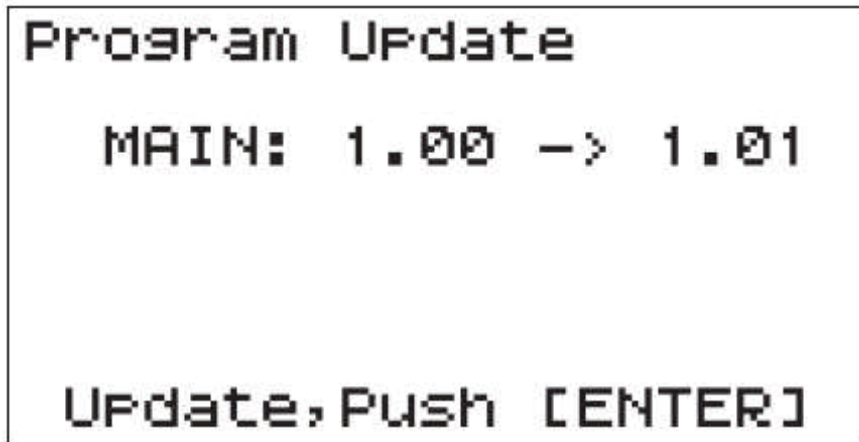
The root directory is the top level directory of your SD card. It is designated with a drive letter such as D:\, E:\, F:\, etc. **Do not put the update file inside any of the folders.**

### 3. Perform Firmware Update

- Now that the MAIN.BIN file is in the root directory of your SD card, eject or "safely remove" the SD card from your computer and plug the SD card back into the R-44..
- Plug AC adapter into R-44 DC In jack.
- NOTE:** Do not attempt System Update on battery power!
- Press and hold the [REPEAT] and [DISP] buttons while powering up the R-44.



- Release the [REPEAT] and [DISP] buttons once you see the "Program Update - Now Checking File" display.
- After reading the update file, the R-44 will display a prompt that shows the old and new versions:



Your R-44 may show other old and update version numbers.

**NOTE:** *You can opt out of performing the update by pressing [POWER].*

- Begin the update process by pressing the [ENTER] button.

***Do not remove the SD card or power down the R-44 until the update process is complete!***

- When the update process is complete, the [PLAY] button will blink.
- Power down the R-44.
- Confirm the new System version by performing the Version Check procedure.

You can delete the MAIN.BIN update file from your SD card by plugging the card back into your computer and manually deleting it.

## Update Failure Codes

If a problem occurs during the update, a message may appear on the screen:

### **INVALID FILE!!**

The update file is corrupt or was not copied correctly. Re-format the SD card, copy the MAIN.BIN file to its root directory and re-do the update procedure.

### **NO FILE!!**

No update file is present. Confirm the MAIN.BIN file is in the **root directory** of the SD card.

### **NO CARD!!**

No SD card is inserted. Make sure the SD card with its MAIN.BIN is in the R-44.

### **FLASH WRITE ERROR!!**

An error occurred while writing to flash memory. Redo the update from the beginning. If the error occurs even after re-doing the procedure, the flash memory may have a problem. Contact Roland Support at 1-800-380-2580.

*If you have any problems updating your Roland product, you can contact our Support staff at 800-380-2580.*